

# **VETERANS IN TEXAS: A DEMOGRAPHIC STUDY**

Texas Workforce Investment Council

December 2025 Update

---

This page intentionally left blank.

---

# Table of Contents

<b>Table of Contents</b> .....	<b>i</b>
<b>List of Tables</b> .....	<b>iii</b>
<b>List of Figures</b> .....	<b>v</b>
<b>Introduction</b> .....	<b>1</b>
The Texas Workforce Investment Council .....	1
Scope of Report.....	1
<b>Methodology</b> .....	<b>3</b>
Data Sources .....	3
Data Processing.....	3
Concepts .....	4
Data Issues and Limitations.....	5
<b>Veterans in the U.S.</b> .....	<b>6</b>
U.S. Veteran Population Trends.....	6
Regional Patterns .....	6
Demographic Characteristics of the U.S. Veteran Population.....	7
U.S. Veterans and Disabilities.....	9
Recent National Labor Force Trends for Veterans.....	10
<b>Veterans in Texas</b> .....	<b>13</b>
Texas Veteran Population Trends and Regional Patterns .....	13
Demographic Characteristics of the Texas Veteran Population .....	14
Texas Veterans and Disabilities .....	16
Characteristics of the Veteran Labor Force in Texas .....	19
Average Salaries of Texas Veteran Labor Force Participants .....	22
<b>Concluding Comments</b> .....	<b>24</b>

**References.....25**  
**Appendix A: Data Processing Framework.....26**  
**Appendix B: Veterans in Texas by LWDA, 2023.....27**  
**Appendix C: Veterans by County in Each LWDA, 2023 .....28**

## List of Tables

Table 1: The 10 States with the Largest Veteran Populations, 2023 .....	7
Table 2: Percentages of U.S. Veterans and Nonveterans 25 and Older by Education Level, 2023.....	8
Table 3: Percentages of U.S. Veterans and Nonveterans by Age Categories, 2023.....	8
Table 4: Percentages of U.S. Veterans with Service-Connected Disability Ratings, 2023 .....	10
Table 5: Race and Ethnicity of Texas Veterans and Nonveterans, 2023 .....	14
Table 6: Percentages of Male and Female Texas Veterans by Period of Service, 2023 .....	14
Table 7: Percentages of Texas Veterans and Nonveterans 18 and Older by Education Level, 2023 .....	15
Table 8: Percentages of Texas Veterans and Nonveterans by Age Categories, 2023 .....	15
Table 9: Median Age of Texas Veterans by Period of Service, 2023 .....	16
Table 10: Percent of Veterans and Nonveterans (18 and Older) Reporting a Disability in Texas, 2023 .....	17
Table 11: Percent of Veterans Reporting a Disability in Texas by Period of Service.....	18
Table 12: Percentages of Texas Veterans with Service-Connected Disability Ratings, 2023 .....	18
Table 13: Percentages of Texas Veterans with Service-Connected Disability Ratings by Period of Service, 2023 .....	19
Table 14: Texas Veteran and Nonveteran Labor Force Participants by Age Group, 2023 .....	19
Table 15: Class of Worker for Texas Veteran Labor Force Participants, 2023.....	20
Table 16: Top 20 Industries Employing Texas Veterans, 2023 .....	21
Table 17: Top 20 Occupations of Veterans in Texas, 2023.....	22
Table 18: Average Yearly Salary for Texas Total Veteran Labor Force Participants by Educational Attainment, 2023 .....	23
Table 19: LWDA 1 Panhandle – Veterans by County, 2023.....	28
Table 20: LWDA 2 South Plains – Veterans by County, 2023 .....	29
Table 21: LWDA 3 North Texas – Veterans by County, 2023.....	29
Table 22: LWDA 4 North Central Texas – Veterans by County, 2023 .....	30
Table 23: LWDA 5 Tarrant County – Veterans by County, 2023.....	30
Table 24: LWDA 6 Greater Dallas – Veterans by County, 2023.....	30
Table 25: LWDA 7 Northeast Texas – Veterans by County, 2023 .....	31
Table 26: LWDA 8 East Texas – Veterans by County, 2023 .....	31
Table 27: LWDA 9 West Central Texas – Veterans by County, 2023 .....	32
Table 28: LWDA 10 Borderplex – Veterans by County, 2023 .....	32
Table 29: LWDA 11 Permian Basin – Veterans by County, 2023.....	33
Table 30: LWDA 12 Concho Valley – Veterans by County, 2023 .....	34
Table 31: LWDA 13 Heart of Texas – Veterans by County, 2023.....	34
Table 32: LWDA 14 Capital Area – Veterans by County, 2023 .....	35
Table 33: LWDA 15 Rural Capital Area – Veterans by County, 2023.....	35
Table 34: LWDA 16 Brazos Valley – Veterans by County, 2023.....	35
Table 35: LWDA 17 Deep East Texas – Veterans by County, 2023 .....	36
Table 36: LWDA 18 Southeast Texas – Veterans by County, 2023 .....	36
Table 37: LWDA 19 Golden Crescent – Veterans by County, 2023 .....	37
Table 38: LWDA 20 Alamo – Veterans by County, 2023 .....	37
Table 39: LWDA 21 South Texas – Veterans by County, 2023.....	38

Table 40: LWDA 22 Coastal Bend – Veterans by County, 2023.....	38
Table 41: LWDA 23 Lower Rio Grande Valley – Veterans by County, 2023 .....	38
Table 42: LWDA 24 Cameron – Veterans by County, 2023 .....	39
Table 43: LWDA 25 Texoma – Veterans by County, 2023 .....	39
Table 44: LWDA 26 Central Texas – Veterans by County, 2023 .....	39
Table 45: LWDA 27 Middle Rio Grande – Veterans by County, 2023 .....	40
Table 46 LWDA 28 Gulf Coast – Veterans by County, 2023 .....	40

## List of Figures

Figure 1: Number of U.S. Veterans and Percentage of Population, 1980-2021 .....	6
Figure 2: U.S. Veterans' Period of Service, 2021 .....	9
Figure 3: National Unemployment Rates for U.S. Veterans and Nonveterans, 2008-2021 .....	10
Figure 4: National Unemployment Rates for Gulf War Era I Veterans, Gulf War Era II Veterans, and Nonveterans, 2008-2021.....	11
Figure 5: National Unemployment Rates for Men and Women: Nonveterans, Gulf War Era II Veterans, and Gulf War Era I Veterans, 2008-2021.....	12
Figure 6: Number of Texas Veterans and Percentage of Population, 1980-2021.....	13
Figure 7: Texas Veterans' Period of Service, 2021.....	16
Figure 8: Number of Veterans in Texas by LWDA, 2023 .....	27

## Introduction

Demographic studies provide significant information about the population within a geographic location. Household and persons' economic, social, and housing information of the different categories of the population are products of demographic studies, of which veterans are one of the interesting categories. The veterans are a set of the population that previously served on active duty in the United States (U.S.) armed forces and were civilians at the time of the survey (U.S. Bureau of Labor Statistics, 2025a).

Although veterans are a heterogeneous group, and individual characteristics vary within the veteran population, many veterans have received extensive training in the military and possess valuable technical skills, leadership abilities, and numerous soft skills (such as time management, team orientation, strong work ethic, self-confidence, and bearing) that are in high demand by employers (U.S. Bureau of Labor Statistics, 2025b). These attributes make the veteran population a valuable resource for Texas employers and the Texas economy. The Texas workforce system must ensure that veterans are prepared for employment following their military service and that employers have access to every available skilled worker.

### The Texas Workforce Investment Council

The Texas Workforce Investment Council (Council) was created in 1993 by the 73<sup>rd</sup> Texas Legislature. As an advisory body to the Governor and the legislature, the Council assists with strategic planning for and evaluation of Texas' workforce system. The Council promotes the development of a well-educated, highly skilled workforce for Texas and advocates for a workforce system that provides quality workforce education and training opportunities. The 19-member Council includes representatives from business, labor, education, community-based organizations, and the Council's five-member state agencies.

#### *Statutory Directive*

Under Title 10 Texas Government Code Section 2308.101, the Council is responsible for promoting the development of a well-educated, highly skilled workforce and advocating the development of an integrated workforce system to provide quality workforce education and training to address the needs of employers and current and future workers in Texas.

#### *The State Workforce System Strategic Plan*

The development of an integrated strategic plan for the workforce system is one of the Council's primary responsibilities. To sustain and increase economic growth, a well-trained labor supply must be available for employers seeking to establish, conduct, or expand business operations in Texas. The mission of *Accelerating Alignment: Texas Workforce System Strategic Plan for Fiscal Years 2024–2031* is to position Texas as a global economic leader by growing and sustaining a competitive workforce. All Texans are part of the critical pool of potential employees, including veterans.

### Scope of Report

The Council prepared this report to detail the demographic characteristics of the veteran population in Texas. This research can be utilized to understand the significant workforce issues related to veterans and

as a general reference for data about this specific segment of the population. In the following section, data issues and limitations are discussed, and important concepts are defined. The third section includes national data to provide a general overview of the veteran population in the U.S. and to discuss recent national labor force trends for veterans. The fourth section describes the veteran population in Texas with a focus on disabilities and the characteristics of veteran labor force participants. Finally, significant findings are summarized, and concluding comments are offered.

## Methodology

This study analyzes multiple aspects of the veteran population at national and state levels using several data sources. As with all research, the limitations associated with the data sources determine the specific types of analyses that can be conducted. Additionally, this study references and utilizes several technical concepts with specific definitions. This section details the data sources, data limitations, and the key concepts related to this research.

### Data Sources

The primary data sources used for this research are the U.S. Census 2023 American Community Survey (ACS) and labor force data from the Bureau of Labor Statistics (BLS). The ACS is an ongoing, yearly survey that samples a small percentage of the population including noninstitutionalized individuals living in group quarters such as college dormitories, residential treatment centers, and nursing facilities. The sample responses are weighted to approximate the demographic characteristics of the entire population. ACS data are available as summary tables and Public Use Microdata Sample (PUMS) files. The microdata files contain individual survey responses, which allow custom analysis, while summary tables are pre-tabulated datasets with fewer variables. In this report, microdata is used for analyses at the national, state, and local levels to maintain consistency.

The baseline population for each county and the county-specific rates for veterans were extracted from the 2023 ACS five-year estimates. The five-year estimates are generally used for analyzing smaller populations and geographies (U.S. Census Bureau, 2020; U.S. Census Bureau, 2021). Counties are not represented on the survey; allocation factors developed by the Missouri Census Data Center (MCDC), (2022) were used to align the respondents in the ACS geographic segments called Public Use Microdata Area (PUMA) with Texas counties. Rounding may affect totals.

BLS derives annual and monthly labor force statistics from the Current Population Survey (CPS). The CPS is an ongoing monthly survey administered to a sample of households. Economic statistics such as the national unemployment rate and measures related to employment and income use CPS data.

### Data Processing

The findings from this report were processed through multifold data preparation and analysis from the aforementioned data sources' Application Programming Interface (API). The BLS data provide succinct categorized data variables and information for easy access and application. The ACS PUMS (microdata) file is detailed with 275 persons' variables from more than two million Texas respondents and a total of over 16.2 million U.S. respondents. Therefore, the PUMS (microdata) files for both 10 consecutive years longitudinal data and current year dataset required some form of data preparation using API and Extraction, Transformation, Loading (ETL) model. The cleaned datasets were analyzed into specific tables and loaded into the database for the final report visualization of tables and charts.

The coded values in the raw dataset were recategorized according to the PUMS data dictionary. Additionally, veterans' periods of service were consolidated into six categories. The CPS classifies

veterans into six distinct periods of service based on the year of service (Bureau of Labor Statistics, 2024; Bureau of Labor Statistics, 2025b). These two sources established the veterans’ period of service categorization as follows:

- I. Gulf War era II (September 2001–present)
- II. Gulf War era I (August 1990–August 2001)
- III. Vietnam era (August 1964–April 1975)
- IV. Korean War (July 1950–January 1955)
- V. World War II (December 1941–December 1946)
- VI. Other service periods (all other time periods)

CPS classification provided that veterans who served in more than one wartime period should be classified in the most recent period. The analysis also includes the conversion of specific PUMA data to county and local workforce development area (LWDA) data by multiplying the estimated PUMA data with the counties’ allocation factor in each PUMA. The data processing is extensively illustrated in Appendix A.

## Concepts

Several important concepts and categories are used throughout this report and serve as the basis for many of the analyses. The specific ways in which these concepts and categories are defined determine the number of individuals in these categories and the description of their characteristics. The concepts are conventional and frequently used by BLS and the U.S. Census Bureau. For clarity and replication of the analyses, the important concepts and categories referenced in this report are discussed in this section.

### *Veteran*

In this report, the definition of “veteran” is based on the concept of a civilian veteran utilized by the Census Bureau. Title 38 of the Code of Federal Regulations (U.S. Department of Veterans Affairs, 2025) defines a veteran as “a person who served in the active military, naval, or air service and who was discharged or released under conditions other than dishonorable.” Individuals currently on active duty are not considered veterans or included in these analyses.

### *Noninstitutionalized Population*

The analyses in this report primarily considered the noninstitutionalized population except when decennial census datasets were used. The noninstitutionalized population is composed of all individuals (including members of the armed forces), who are not inmates of institutions such as prisons, mental health facilities, or homes for older adults. Several analyses present veterans as a percentage of the population and provide some comparison with nonveterans.

### *Civilian Labor Force*

To remain consistent with accepted terminology and measures related to the labor force (such as the unemployment rate), several analyses in this report depend upon or reference the civilian labor force. The civilian labor force comprises all noninstitutionalized individuals, 16 years of age and older, who are either employed or unemployed and are not members of the armed forces. In this report, the individuals

who constitute the civilian labor force are also referred to as labor force participants. Examples of individuals who are not in the labor force include students in school, homemakers, retirees, people who cannot work because of health problems, and discouraged job seekers (individuals who wanted jobs and looked for work in the past year but abandoned their search believing that no suitable jobs were available) (U.S. Bureau of Labor Statistics, 2023b). Several analyses will also reference the 18 years of age and older civilian labor force.

### *Unemployment*

Individuals are considered unemployed if they do not have a job, have actively looked for work in the previous four weeks, and are currently available for work.

## Data Issues and Limitations

The specific analyses that can be conducted are limited to the variables included in the datasets. Analyses are also limited because estimates are not always available for certain geographies. For example, even though the ACS microdata provide rich demographic data with variables assessing various individual characteristics, data are unavailable at the county level. Therefore, analyses cannot be conducted for counties using only the ACS microdata.

Unlike the decennial census, which is administered to the total population in order to determine accurate counts, the ACS and CPS are based on samples and produce estimates. Since the two data sources utilize different samples and methodologies, the estimates from each source will be similar but will not exactly match. When possible, the ACS estimates will be referenced due to the majority of the analyses in this report being based on that specific dataset.

## Veterans in the U.S.

According to ACS microdata, approximately seven percent of the U.S. noninstitutionalized population 18 years and older (17,519,355 individuals) were veterans in 2023. Veterans also accounted for about seven percent of the 18 and older civilian labor force in 2023. This section provides a general demographic description of the U.S. veteran population as a context for a discussion of the veteran population in Texas in the following section.

### U.S. Veteran Population Trends

The veteran population in the U.S. has been declining due in part to the mortality of older veterans who served in World War II and Korea (U.S. Bureau of Labor Statistics, 2024). Figure 1 illustrates the number of veterans in the U.S. and the percentage of veterans in the population from 2014 to 2023. Over that period, the veteran population decreased from nine percent (21,352,742 individuals) in 2014 to approximately seven percent (17,519,355 individuals) in 2023.

**Figure 1: Number of U.S. Veterans and Percentage of Population, 2014–2023**

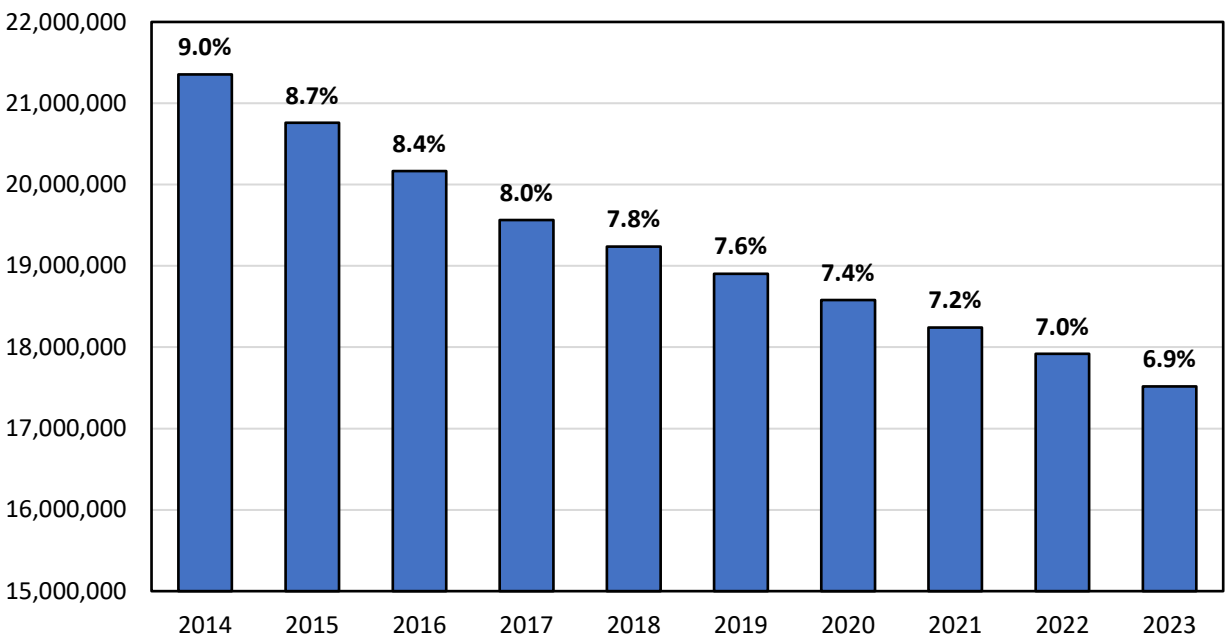


Figure notes: 2023 ACS microdata. Percentages represent the portion of the 18 years of age and older noninstitutionalized population that are veterans.

### Regional Patterns

The veteran population is not evenly distributed across the nation (U.S. Bureau of Labor Statistics, 2024). ACS microdata indicate that the South had the largest number of veterans in 2023. The region with the second largest number of veterans was the West, followed by the Midwest. The Northeast had the

smallest number of veterans. The regional distribution of veterans can be examined in even more detail by reviewing the veteran population of each state.

Table 1 illustrates the 10 states with the largest veteran populations in 2023. Texas had the largest veteran population of all the states.

**Table 1: The 10 States with the Largest Veteran Populations, 2023**

State	Population Age 18 and Older	Veterans	Percentage of Veterans in 18 and Older Population
Texas	21,807,727	1,498,824	6.9%
California	30,207,403	1,496,964	5.0%
Florida	17,369,299	1,401,463	8.1%
Virginia	6,668,523	764,133	11.5%
North Carolina	8,155,302	710,684	8.7%
Georgia	8,147,914	653,662	8.0%
Pennsylvania	10,140,735	651,948	6.4%
Ohio	9,017,331	622,845	6.9%
New York	15,598,339	622,211	4.0%
Washington	6,013,195	540,816	9.0%

Table note: 2023 ACS PUMS (microdata).

The veteran population can also be expressed as a percentage of the total noninstitutionalized population of everyone 18 years of age and older to give insight into the concentration of veterans in each state. Virginia had the most significant percentage of veterans at 11.5 percent, followed by Washington, North Carolina, Florida, and Georgia. In contrast, large states like New York had the lowest percentage of veterans at four percent, followed by California, Pennsylvania, Ohio, and Texas.

### Demographic Characteristics of the U.S. Veteran Population

The veteran population of the U.S. differs from the nonveteran population in several demographic characteristics. In 2023, a greater percentage of veterans were non-Hispanic whites (72.5 percent) compared to nonveterans (60.4 percent). Gender differences between the veteran and nonveteran populations were also pronounced. Approximately 90 percent of veterans were male in comparison to 45.8 percent who were nonveterans.

The veteran and nonveteran populations also differ regarding educational attainment. Table 2 illustrates that in 2023, a greater percentage of nonveterans 25 years of age and older had less than a high school diploma or equivalent compared to the veteran population. Approximately 37 percent of veterans 25 years of age and older had some college, or an associate degree, compared to 27.5 percent of nonveterans.

**Table 2: Percentages of U.S. Veterans and Nonveterans 25 and Older by Education Level, 2023**

Education Level	Veterans	Nonveterans
Less than high school graduate	4.6%	10.9%
High school graduate (includes equivalency)	26.9%	26.0%
Some college or associate's degree	37.1%	27.5%
Bachelor's degree or higher	31.3%	35.6%
<b>Civilian population 25 years and older</b>	<b>16,057,464</b>	<b>208,160,609</b>

Table note: 2023 ACS PUMS (microdata).

Additionally, the veteran population tends to be older than the nonveteran population. Table 3 illustrates that approximately 63 percent of veterans were 55 and older compared to approximately 36 percent of nonveterans. Only 13 percent of veterans were between the ages of 18 and 34 in 2023.

**Table 3: Percentages of U.S. Veterans and Nonveterans by Age Categories, 2023**

Age Categories	Veterans	Nonveterans
18 to 34 years	13.0%	30.6%
35 to 54 years	24.2%	33.3%
55 to 64 years	17.3%	16.5%
65 to 74 years	22.4%	12.2%
75 years and over	23.1%	7.4%
<b>Total</b>	<b>17,519,355</b>	<b>237,669,507</b>

Table note: 2023 ACS PUMS (microdata).

The age difference between veterans and nonveterans can partially be explained by the time in which most veterans served in the military. In 2023, 41.2 percent of the veteran population served during the Vietnam, Korean, or World War II eras. According to ACS data, 2023 saw the roughly equivalent percentage of veterans who served during Gulf War Era II (September 2001 to present) and Gulf War Era I (August 1990 through August 2001) at 30.3 percent and 28.5 percent, respectively. Figure 2, on the following page, illustrates the percentages of veterans who served in each era.

**Figure 2: U.S. Veterans' Period of Service, 2023**

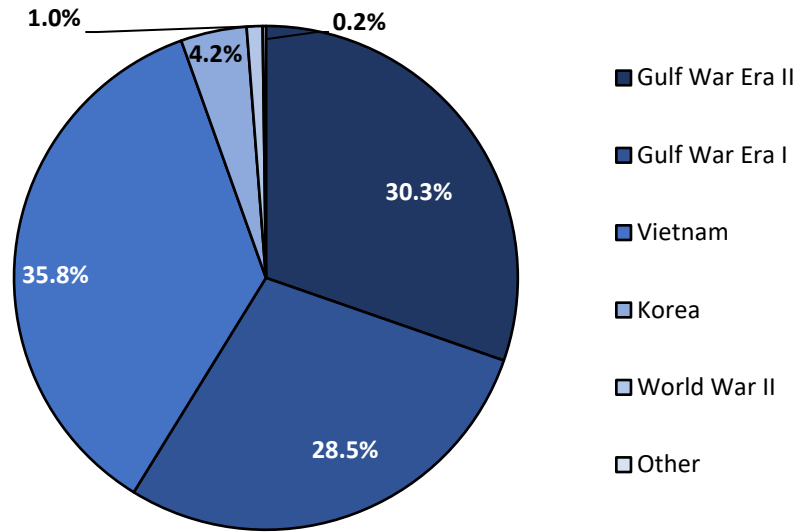


Figure note: 2023 ACS PUMS (microdata). Period of service is determined by the most recent era served. Gulf War Era I is from August 1990 to August 2001. Gulf War Era II is from September 2001 to the present.

## U.S. Veterans and Disabilities

The issue of disabilities is particularly relevant for the veteran population (U.S. Equal Employment Opportunity Commission, 2025). On average, the veteran population is older than the nonveteran population, and the likelihood of developing a disability increases with age (Texas Workforce Investment Council, 2025). Additionally, because of the rigors associated with military service, numerous veterans have service-connected disabilities. Veterans with a service-connected injury or illness incurred or aggravated during active military service are assessed and assigned a disability rating. Depending on the severity of the disability rating, veterans may receive disability benefits in the form of a monthly compensation.

Of the 17,519,355 veterans in the U.S., 27.6 percent (4,828,274 individuals) have a service-connected disability rating. Table 4 illustrates the percentages of veterans within the different ranges of disability ratings. Disability compensation is a monetary benefit paid to veterans who are determined by the U.S. Department of Veterans Affairs to be disabled by an injury or illness that was incurred or aggravated during active military service. These disabilities are considered to be service-connected. To be eligible for compensation, the veteran must be separated or discharged under conditions other than dishonorable. Approximately four percent of veterans have a zero percent disability rating. A zero percent disability rating indicates a service-related injury that does not impair the veteran, such as a superficial scar. The majority of veterans with a service-connected rating have a disability rating of 10 to 20 percent and/or 70 to 100 percent.

**Table 4: Percentages of U.S. Veterans with Service-Connected Disability Ratings, 2023**

Service-Connected Disability Ratings	Number	Percent
0 percent	185,962	3.9%
10 or 20 percent	1,181,124	24.5%
30 or 40 percent	662,223	13.7%
50 or 60 percent	603,645	12.5%
70 percent or higher	1,976,266	40.9%
Rating not reported	219,054	4.5%
<b>Total</b>	<b>4,828,274</b>	<b>100%</b>

Table note: 2023 ACS PUMS (microdata).

According to the Bureau of Labor Statistics (2024), 46 percent (2.4 million) of Gulf War Era II veterans had a service-connected disability, and approximately 31 percent (907,000) of Gulf War Era I veterans reported a service-connected disability. Disabilities will be discussed in more detail in the next section, with a focus on Texas veterans.

### Recent National Labor Force Trends for Veterans

Figure 3 illustrates that veterans' unemployment rate was lower than that of nonveterans from 2014 to 2023. However, unemployment rates are generally lower for older individuals, and the veteran population is older than the nonveteran population, on average. BLS data indicate that in 2023, the unadjusted unemployment rate was 2.8 percent and 3.6 percent for veterans and nonveterans, respectively. The previous year saw a drastic increase in the unemployment rate from 2019 to 2021 due to the COVID-19 pandemic.

**Figure 3: National Unemployment Rates for U.S. Veterans and Nonveterans, 2014–2023**

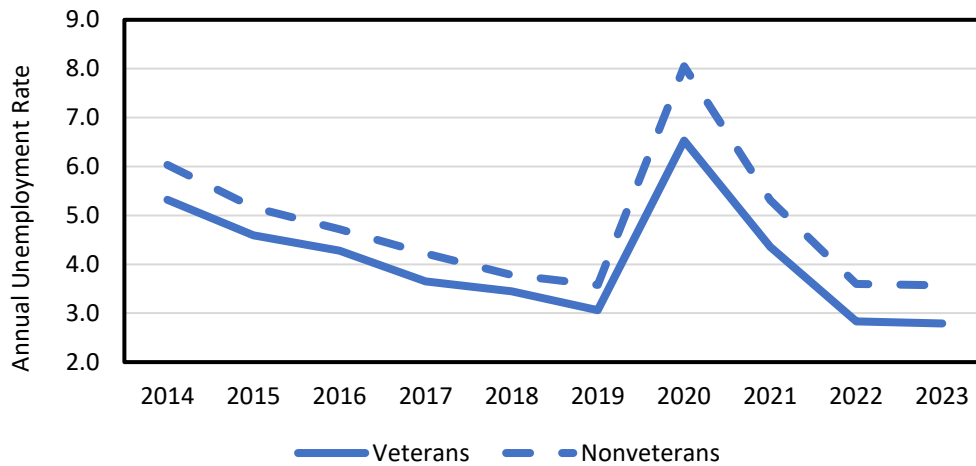


Figure note: Annual unemployment rates are not seasonally adjusted. Data source is BLS.

Differences in unemployment rates are observed when veterans’ eras of service are considered. Figure 4 compares the unemployment rates of nonveterans with veterans who served during Gulf War Era II (September 2001 to present). Gulf War Era I (August 1990 through August 2001) data are included for comparative purposes. Trend data from 2014 to 2023 indicate that the unemployment rate for Gulf War Era I veterans has consistently remained lower than that of both Gulf War Era II veterans and nonveterans. Before the COVID-19 pandemic, the annual, not seasonally adjusted, unemployment rate for Gulf War Era II veterans exceeded that of nonveterans. In 2019, the unemployment rates for Gulf War Era II veterans and nonveterans were approximately equal. Following the pandemic, the unemployment rate for nonveterans surpassed that of both Gulf War Era II and Gulf War Era I veterans. At the end of 2023, the BLS data shows that the not seasonally adjusted unemployment rate was 3.6 percent for nonveterans, 3.3 percent for Gulf War Era II veterans, and 2.3 percent for Gulf War Era I veterans.

**Figure 4: National Unemployment Rates for Gulf War Era I Veterans, Gulf War Era II Veterans, and Nonveterans, 2014–2023**

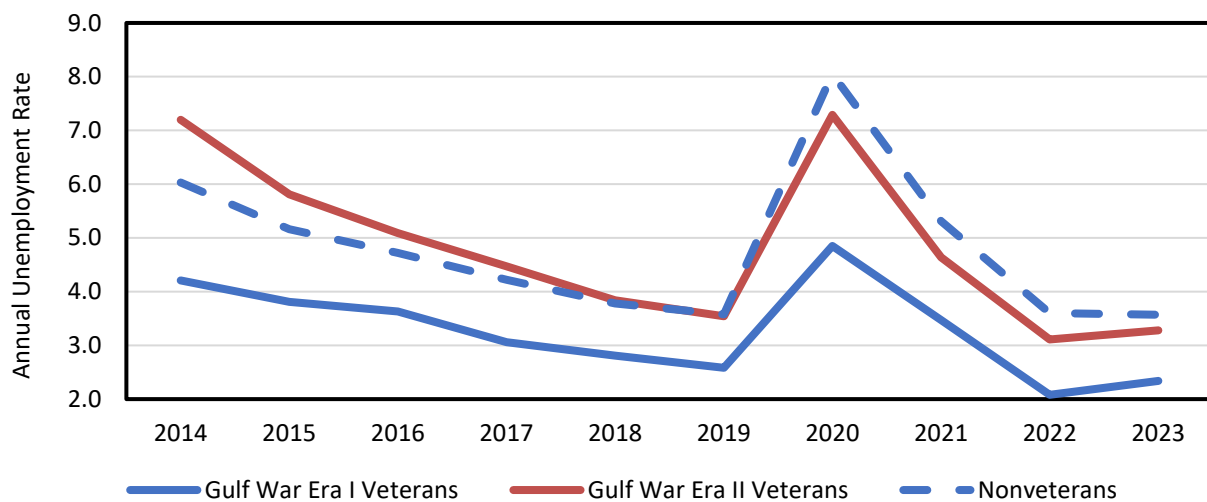


Figure note: Annual unemployment rates are not seasonally adjusted. Data are from BLS.

Gender differences in unemployment also exist among veterans. Figure 5 illustrates that between 2014 and 2023, nonveteran and Gulf War Era I men had slightly higher unemployment rates than nonveteran and Gulf War Era I women. Gulf War Era II male veteran unemployment rates have been historically lower than Gulf War Era II female veteran unemployment rates.

**Figure 5: National Unemployment Rates for Men and Women: Nonveterans, Gulf War Era II Veterans, and Gulf War Era I Veterans, 2014–2023**

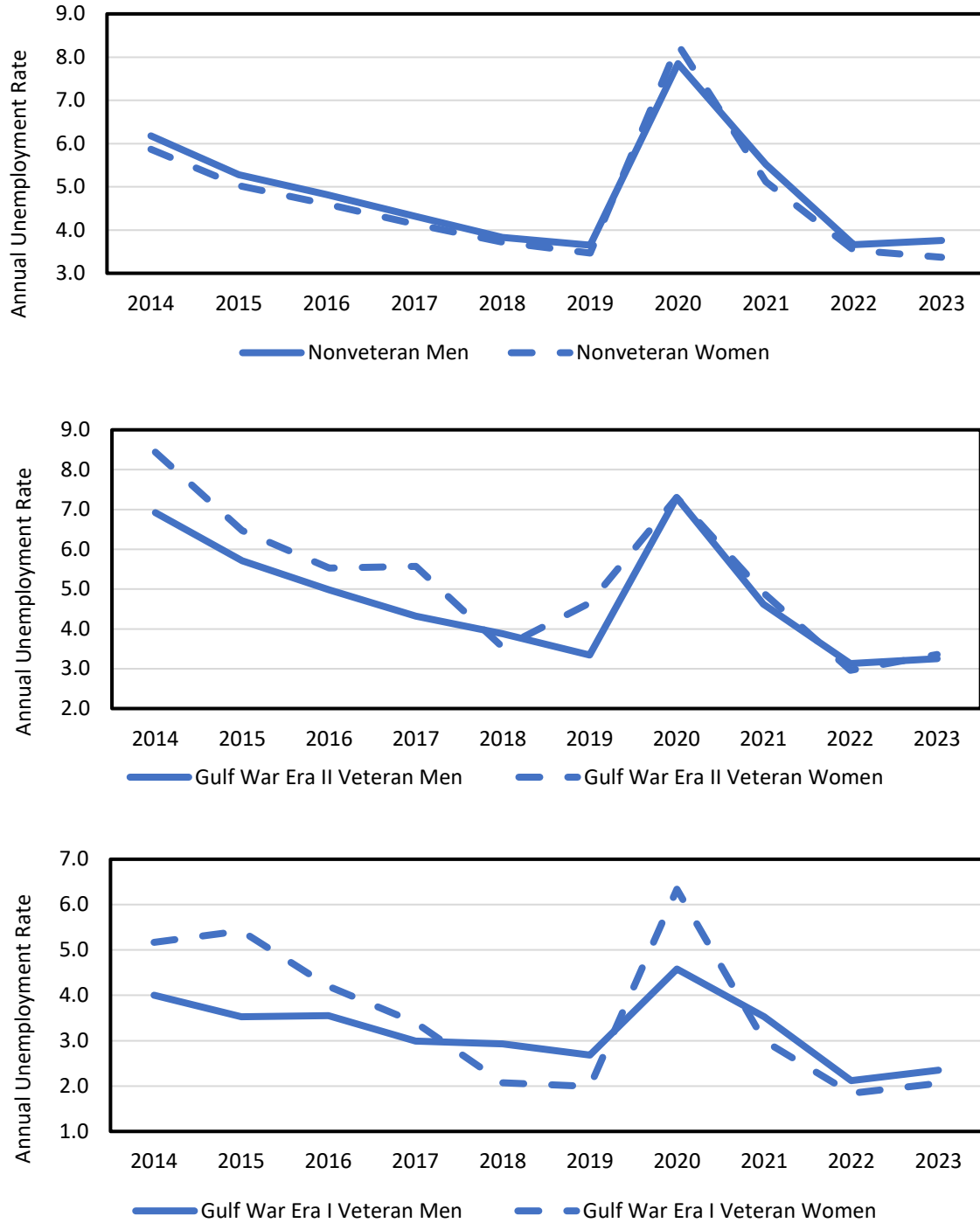


Figure note: Annual unemployment rates are not seasonally adjusted. The rates are for veterans 18 years of age and older. Gulf War Era I is from August 1990 to August 2001. Gulf War Era II is from September 2001 to the present. Data source is BLS.

## Veterans in Texas

According to ACS microdata estimates, approximately seven percent of the noninstitutionalized population 18 years and older (1,498,824 individuals) in Texas were veterans in 2023. In this section, a description of the veteran population in Texas will be provided with a focus on regional distribution, demographic characteristics, prevalence of disabilities, and labor force characteristics.

### Texas Veteran Population Trends and Regional Patterns

Figure 6 illustrates the number of veterans in Texas and the percentage of veterans in the population from 2014 to 2023. Generally, the number of veterans has continued to decrease overtime. In 2014, 8.7 percent of the 18 years of age and older population in Texas (1,625,349 individuals) were veterans. However, because the population of Texas grew rapidly, veterans have accounted for a smaller percentage of the population. By the 2020–2023 timeframe, data showed that the number of Texas veterans has been slightly under 1.5 million individuals 18 years of age and older.

**Figure 6: Number of Texas Veterans and Percentage of Population, 2014–2023**

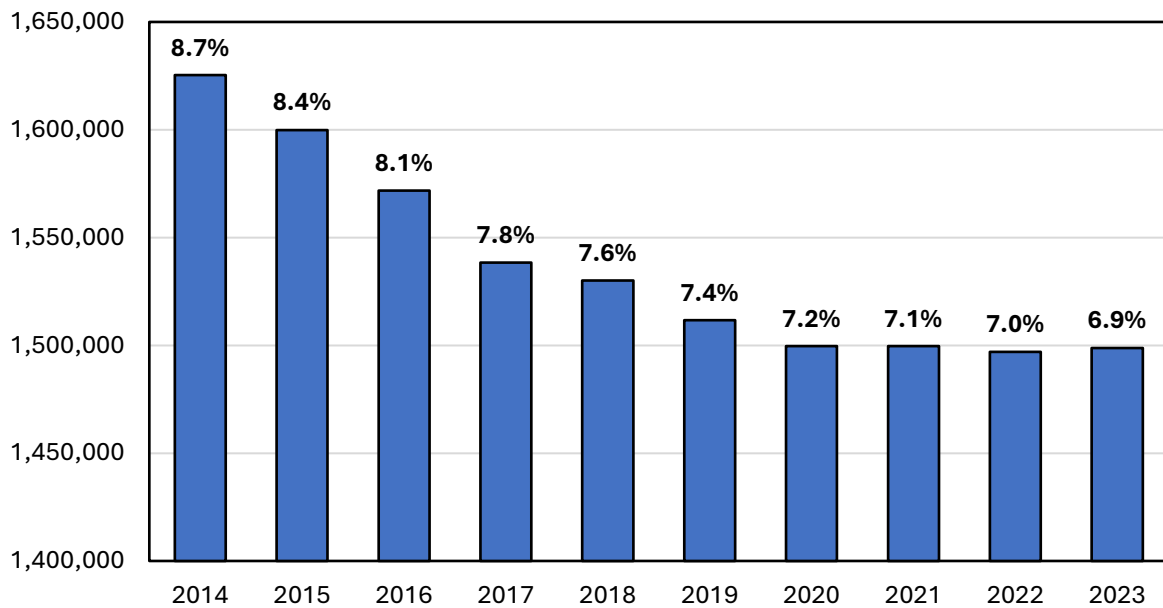


Figure notes: 2023 ACS microdata. Percentages represent the portion of the total noninstitutionalized veteran population.

The veteran population of Texas is not evenly distributed across the state. Appendix B contains a thematic map that utilizes ACS microdata to illustrate the veteran population in each county. Similar to the findings at the national level, counties with large populations generally have the largest numbers of veterans. Bexar County was home to 170,569 veterans surpassing Harris County, the most populous county in the state with 152,982 veterans. The counties with the largest numbers of veterans in 2023 were Bexar, Harris, Tarrant, Dallas, Bell, El Paso, Travis, Denton, Collin, and Williamson. Over half (55

percent) of the state’s veteran population resided in these 10 counties. Appendix C contains the numbers of veterans in each county by local workforce development area (LWDA).

## Demographic Characteristics of the Texas Veteran Population

The Texas veteran population differs from the nonveteran population of the state in several demographic characteristics. As illustrated in Table 5, a greater percentage of Texas veterans were White (58.6 percent) compared to nonveterans (42.1 percent). A greater percentage of Texas veterans were also African American (14.8 percent) compared to nonveterans (11.5 percent). Approximately 21 percent of the Texas veteran population was Hispanic in 2023.

**Table 5: Race and Ethnicity of Texas Veterans and Nonveterans, 2023**

Race/Ethnicity	Veteran (Number)	Veteran (Percent)	Nonveteran (Number)	Nonveteran (Percent)
White	878,512	58.6%	8,555,779	42.1%
Hispanic	312,830	20.9%	7,644,385	37.6%
African American	221,650	14.8%	2,343,745	11.5%
Asian	24,493	1.6%	1,185,109	5.8%
Other	61,339	4.1%	579,885	2.9%
<b>Total</b>	<b>1,498,824</b>	<b>-</b>	<b>20,308,903</b>	<b>-</b>

Table note: 2023 ACS PUMS (microdata).

Gender differences between the veteran and nonveteran populations are also pronounced. In 2023, 82 percent of Texas veterans were male compared to 46.3 percent of nonveterans. Approximately 12.5 percent of the total Texas veteran population was female. However, the percentages of female veterans differ when the period of service is considered. Table 6 illustrates that the female veteran population has grown over time. Only 3.8 percent of World War II era veterans and 3.9 percent of Vietnam era veterans were female. However, 18 percent of Gulf War Era II veterans and 15.4 percent of Gulf War Era I veterans in Texas were female.

**Table 1: Percentages of Male and Female Texas Veterans by Period of Service, 2023**

Period of Service	Total Number	Men (Number)	Men (Percent)	Women (Number)	Women (Percent)
Gulf War Era II	565,182	463,650	82.0%	101,532	18.0%
Gulf War Era I	435,978	368,890	84.6%	67,088	15.4%
Vietnam	442,131	424,797	96.1%	17,334	3.9%
Korea	43,386	42,001	96.8%	1,385	3.2%
World War II	9,505	9,143	96.2%	362	3.8%
Other	2,642	2,574	97.4%	68	2.6%
<b>Total</b>	<b>1,498,824</b>	<b>1,311,055</b>	<b>-</b>	<b>187,769</b>	<b>-</b>

Table note: 2023 ACS PUMS (microdata).

The veteran and nonveteran populations in Texas also differ according to education level. Table 7 illustrates that a greater percentage of nonveterans 18 and older had less than a high school diploma compared to veterans in 2023. Approximately 40 percent of veterans 18 years of age and older had some college or an associate's degree compared to 29.1 percent of nonveterans in Texas. A greater percentage of veterans (33.5 percent) also had a bachelor's degree or higher compared to nonveterans (30.4 percent) in Texas.

**Table 7: Percentages of Texas Veterans and Nonveterans 18 and Older by Education Level, 2023**

Education Level	Veterans	Nonveterans
Less than high school graduate	4.1%	14.7%
High school graduates (includes equivalency)	22.5%	25.8%
Some college or associate's degree	39.9%	29.1%
Bachelor's degree or higher	33.5%	30.4%
<b>Noninstitutionalized population 18 years and older</b>	<b>1,498,824</b>	<b>20,308,903</b>

Table note: 2023 ACS PUMS (microdata).

While the Texas veteran population was younger than the U.S. veteran population, it was older than the nonveteran population in the state. The median age of a veteran in Texas was 63, whereas the median age of a nonveteran was 48. Table 8 illustrates that approximately 54 percent of veterans were 55 and older compared to approximately 31 percent of nonveterans. Approximately 16 percent of Texas veterans were between the ages of 18 and 34, compared to approximately 34 percent of nonveterans in 2023.

**Table 8: Percentages of Texas Veterans and Nonveterans by Age Categories, 2023**

Age Categories	Veterans	Nonveterans
18 to 34 years	15.9%	33.5%
35 to 54 years	30.0%	35.5%
55 to 64 years	16.3%	15.0%
65 to 74 years	19.7%	10.2%
75 years and over	18.1%	5.8%
<b>Total</b>	<b>1,498,824</b>	<b>20,308,903</b>

Table note: 2023 ACS PUMS (microdata).

An analysis of the period in which a majority of Texas veterans served in the military partially explains the age difference between veterans and nonveterans. Figure 7 illustrates the percentages of veterans who served in each era. The greater number of Texas veterans from earlier periods of service inflates the average age of the veteran population. In 2023, approximately 33 percent of the veterans in Texas served during the Vietnam, Korean, or World War II eras. Approximately 29 percent of Texas veterans served

during the Gulf War Era I (August 1990 through August 2001), and 38 percent of Texas veterans served during the Gulf War Era II (September 2001 to present).

**Figure 7: Texas Veterans' Period of Service, 2023**

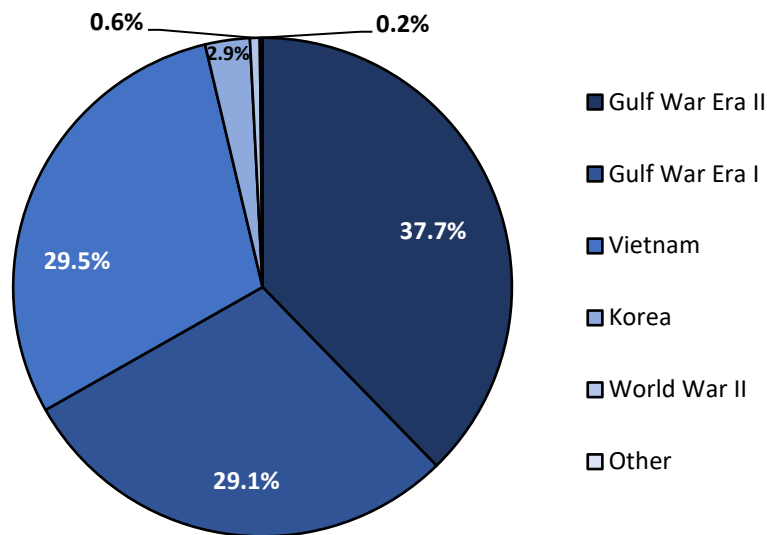


Figure note: 2023 ACS PUMS (microdata). Period of service is determined by the most recent era served.

Age differences can also be observed within the veteran population when each period of service is analyzed separately (Table 9). The median ages of Gulf War Era II and Gulf War Era I veterans in Texas were 37 and 58 years of age, respectively. The median age of a Vietnam veteran was 74. Texas veterans who served during World War II had a median age of 92, the oldest median age of all service periods.

**Table 9: Median Age of Texas Veterans by Period of Service, 2023**

Period of Service	Median Age	Total in Each Service Period
Gulf War Era II	37	565,182
Gulf War Era I	58	435,978
Vietnam	74	442,131
Korea	88	43,386
World War II	92	9,505
Other	92	2,642
<b>Total</b>	<b>63</b>	<b>1,498,824</b>

Table note: 2023 ACS PUMS (microdata).

### Texas Veterans and Disabilities

The prevalence of disabilities within the veteran population is relevant since the veteran population is older than the nonveteran population on average and the likelihood of developing a disability increases

with age. Approximately 29 percent of Texas veterans (427,999 individuals) report having a disability compared to approximately 13.5 percent of the 18 years of age and older nonveteran population (2,733,012 individuals). Table 10 details the specific types of disabilities reported by the veteran and nonveteran populations in Texas.

The reported disability categories are not mutually exclusive, and one individual may be counted in multiple disability categories. Additionally, the disability may not necessarily be the consequence of military service. As such, an individual can report having a disability but not claim a service-connected disability rating. In 2023, ambulatory difficulty was the disability most frequently reported by 14.4 percent of the veteran population. Hearing and cognitive difficulties were the second and third most frequently reported disabilities. Independent living, vision, and self-care difficulties were the least frequently reported. These data underscore the need for any services that address the needs of veterans, including support for disabilities.

**Table 10: Percent of Veterans and Nonveterans (18 and Older) Reporting a Disability in Texas, 2023**

Reported Disability	Veterans (Number)	Veterans (Percent)	Nonveterans (Number)	Nonveterans (Percent)
Ambulatory difficulty	216,362	14.4%	1,402,067	6.9%
Hearing difficulty	213,852	14.3%	712,403	3.5%
Cognitive difficulty	130,971	8.7%	972,263	4.8%
Independent living difficulty	123,566	8.2%	1,011,986	5.0%
Self-care difficulty	69,482	4.6%	516,575	2.5%
Vision difficulty	71,446	4.8%	623,760	3.1%
<b>Total Population</b>	<b>1,498,824</b>	<b>-</b>	<b>20,308,903</b>	<b>-</b>

Table note: 2023 ACS PUMS (microdata). Reported disability categories are not mutually exclusive, and one individual can report having several disabilities.

Considering that disabilities are associated with increased age and that the median age of veterans differs by period of service, the prevalence of disabilities within the veteran population may vary according to period of service. Table 11 illustrates the reported disabilities of veterans in each period of service.

Generally, the percentages of reported disabilities are greater for the earlier periods of service. Approximately 61 percent of World War II veterans report ambulatory difficulties and approximately 56 percent report hearing difficulties. In comparison, 5.7 percent of Gulf War Era II veterans report ambulatory difficulties and approximately seven percent report hearing difficulties. Cognitive difficulties and independent living difficulties are reported by a larger percentage of veterans of Vietnam, Korea, and World War II.

**Table 11: Percent of Veterans Reporting a Disability in Texas by Period of Service**

Reported Disability	Gulf War Era II	Gulf War Era I	Vietnam	Korea	World War II	Other
Ambulatory difficulty	5.7%	13.0%	23.1%	42.0%	61.4%	49.1%
Hearing difficulty	6.6%	9.7%	25.0%	40.2%	56.3%	42.5%
Cognitive difficulty	8.6%	7.0%	9.2%	17.6%	27.0%	25.5%
Independent living difficulty	4.6%	6.2%	11.6%	30.2%	55.0%	35.9%
Self-care difficulty	1.8%	3.9%	7.1%	17.3%	30.7%	13.3%
Vision difficulty	2.2%	4.1%	7.5%	12.6%	25.5%	13.1%

Table note: 2023 ACS PUMS (microdata).

The greater prevalence of disabilities within the Texas veteran population is an important demographic characteristic of the group. However, the previously presented disability data cannot be directly attributed to military service since the survey asked respondents to report their current disabilities. A better indicator of disabilities related to military service is the service-connected disability rating reported in the ACS microdata. Approximately 29 percent of Texas veterans (427,999 individuals) have a service-connected disability rating. Table 12 illustrates the percentage of Texas veterans within the different ranges of disability ratings. Three percent of Texas veterans have a zero percent disability rating. Approximately 21 percent of veterans with a service-connected rating have a disability rating of 10 or 20 percent. And roughly 47 percent of Texas veterans with a service-connected rating have a disability rating of 70 percent or higher.

**Table 12: Percentages of Texas Veterans with Service-Connected Disability Ratings, 2023**

Service-Connected Disability Ratings	Number	Percent
0 percent	14,887	3.0%
10 or 20 percent	104,341	20.7%
30 or 40 percent	62,741	12.5%
50 or 60 percent	65,671	13.1%
70, 80, 90, or 100 percent	237,060	47.1%
Rating not reported	18,501	3.7%
<b>Total</b>	<b>503,201</b>	-

Table note: 2023 ACS PUMS (microdata).

Service-connected disability ratings can also be analyzed by period of service. Table 13 illustrates the percentage of Texas veterans within the different ranges of disability ratings for each period of service. The period of service with the largest number of Texas veterans with any service-connected disability rating is the Gulf War Era II. This period also had the greatest percentage of veterans with service-connected disability ratings of 70 percent or higher. Approximately 56 percent of Gulf War Era II veterans had service-connected disability ratings of 70 percent or higher in 2023.

**Table 13: Percentages of Texas Veterans with Service-Connected Disability Ratings by Period of Service, 2023**

Service-Connected Disability Ratings	Gulf War Era II	Gulf War Era I	Vietnam	Korea	World War II	Other
0 percent	2.0%	4.1%	2.6%	5.1%	8.0%	0.0%
10 or 20 percent	12.8%	28.4%	27.5%	29.0%	17.5%	51.1%
30 or 40 percent	11.6%	13.5%	12.5%	21.2%	14.4%	10.9%
50 or 60 percent	14.5%	12.1%	11.3%	12.4%	13.6%	6.5%
70, 80, 90, or 100 percent	55.7%	38.2%	42.8%	27.1%	41.3%	26.1%
Rating not reported	3.4%	3.7%	3.3%	5.1%	5.3%	5.4%

Table note: 2023 ACS PUMS (microdata).

### Characteristics of the Veteran Labor Force in Texas

The demographic analyses presented in this subsection focus on Texas veteran labor force participants. Approximately 50 percent of Texas veterans (755,988 individuals) were labor force participants in 2023. These veterans accounted for 5.1 percent of the state’s total workforce. Since unemployment rates are generally lower for older individuals, the unemployment rate for veterans is lower than the state average because the Texas veteran population is older than the nonveteran population. In 2023, the unemployment rate was 3.2 percent for Texas nonveterans and 3.9 percent for Texas veterans (U.S. Bureau of Labor Statistics, 2024).

In 2023, the median age of a veteran labor force participant in Texas was 52. As illustrated in Table 14, approximately 47 percent of employed veteran labor force participants were between the ages of 35 and 54 and approximately 22 percent were between the ages of 55 and 64. Approximately 14 percent of employed veteran labor force participants in Texas were 65 and older.

**Table 14: Texas Veteran and Nonveteran Labor Force Participants by Age Group, 2023**

Age Categories	Total	Employed Veterans	Unemployed Veterans	Employed Nonveterans	Unemployed Nonveterans
17 to 34 years	5,485,930	120,931 (16.8%)	9,306 (26.9%)	4,973,120 (37.2%)	382,573 (53.1%)
35 to 54 years	6,325,943	341,124 (47.3%)	13,432 (38.9%)	5,735,333 (43.0%)	236,054 (32.8%)
55 to 64 years	2,213,151	161,162 (22.3%)	7,098 (20.5%)	1,969,717 (14.8%)	75,174 (10.4%)
65 to 74 years	682,428	73,353 (10.2%)	3,268 (9.5%)	582,955 (4.4%)	22,852 (3.2%)
75 years and over	120,746	24,869 (3.4%)	1,445 (4.2%)	91,048 (0.7%)	3,384 (0.5%)
<b>Total</b>	<b>14,828,198</b>	<b>721,439</b>	<b>34,549</b>	<b>13,352,173</b>	<b>720,037</b>

Table note: 2023 ACS PUMS (microdata).

Veteran labor force participants held various jobs in numerous industries throughout Texas. Table 15 illustrates the percentages of veteran labor force participants by general category of work, also referred to as class of worker. Approximately 62 percent of veteran labor force participants in Texas were employees of private, for-profit companies in 2023. Approximately 23 percent were federal, state, or local government employees, and approximately 10 percent were self-employed.

**Table 15: Class of Worker for Texas Veteran Labor Force Participants, 2023**

Class of Worker	Number	Percent
Employee of a private for-profit company	468,567	62.0%
Employee of federal, state, local government	175,383	23.2%
Self-employed in own business, professional practice, or farm	73,057	9.7%
Employee of a private not-for-profit organization	34,199	4.5%
Unemployed and never worked†	3,150	0.4%
Working without pay in family business or farm	1,632	0.2%
<b>Total</b>	<b>755,988</b>	-

Table note: 2023 ACS PUMS (microdata). Class of worker categorizes people according to the type of ownership of the employing organization. Assigning class of worker categories is, in most cases, independent of industry and occupation. Additionally, class of worker refers to the type of work normally done, or the work performed most regularly.

†Refers to individuals with or without a disability that are "Unemployed and last worked five years ago or earlier or never worked" (U.S. Census Bureau, 2025).

Table 16 illustrates the 20 Texas industries where the highest percentages of veteran labor force participants were employed in 2023. These 20 industries employed approximately 49 percent of the veteran labor force in the state. The industry that employed the greatest percentage of veteran labor force participants was construction. Approximately five percent of the Texas veteran labor force worked in justice, public order, and safety industry in 2023. The third largest employer of veterans was elementary and secondary schools.

**Table 16: Top 20 Industries Employing Texas Veterans, 2023**

Industry	Number	Percent
Construction	59,480	7.9%
Justice, Public Order, and Safety Activities	34,367	4.5%
Elementary and Secondary Schools	31,088	4.1%
National Security and International Affairs	30,102	4.0%
General Medical and Surgical Hospitals, and Specialty Hospitals	26,002	3.4%
Computer Systems Design and Related Services	23,888	3.2%
Truck Transportation	19,462	2.6%
Food Services and Drinking Places	16,547	2.2%
Architectural, Engineering, and Related Services	13,834	1.8%
Management, Scientific, and Technical Consulting Services	12,488	1.7%
Air Transportation	12,265	1.6%
Junior Colleges, Colleges, Universities, and Professional Schools	12,244	1.6%
Investigation and Security Services	11,535	1.5%
Support Activities for Mining	10,400	1.4%
Aircraft and Parts	10,316	1.4%
Warehouse Clubs, Supercenters, and other General Merchandise	9,787	1.3%
Support Activities for Transportation	9,284	1.2%
Administration Of Human Resource Programs	9,079	1.2%
Automotive Repair and Maintenance	9,029	1.2%
Postal Service	8,906	1.2%
<b>Table Total</b>	<b>370,103</b>	<b>49.0%</b>

Table note: 2023 ACS PUMS (microdata). Only the top 20 industries are included in this table. The total number of Texas veteran labor force participants was 755,988 individuals in 2023.

Veterans held different positions across the different industries in Texas. Similarly, Table 17 on the following page shows that approximately 33 percent of veterans in the state held these 20 positions in 2023. Approximately five percent (33,886 individuals) were employed as managers, followed by 33,506 individuals (4.6 percent) as driver/sales workers and truck drivers, and 15,808 individuals (2.2 percent) as police officers.

**Table 17: Top 20 Occupations of Veterans in Texas, 2023**

Occupations	Number	Percent
Managers	33,886	4.7%
Driver/Sales Workers and Truck Drivers	33,506	4.6%
Police officers	15,808	2.2%
Security Guards and Gambling Surveillance officers	12,250	1.7%
Registered Nurses	12,122	1.7%
Retail Salespersons	11,043	1.5%
First-Line Supervisors of Retail Sales Workers	10,938	1.5%
Customer Service Representatives	10,795	1.5%
Laborers and Freight, Stock, and Material Movers	9,299	1.3%
Chief Executives and Legislators	8,752	1.2%
Software Developers	8,714	1.2%
General and Operations Managers	8,263	1.1%
Elementary and Middle School Teachers	8,222	1.1%
Maintenance and Repair Workers, General	8,181	1.1%
Janitors and Building Cleaners	7,958	1.1%
Construction Managers	7,787	1.1%
Stockers and order Fillers	7,147	1.0%
Sales Representatives, Wholesale and Manufacturing	6,867	1.0%
Inspectors, Testers, Sorters, Samplers, and Weighers	6,843	0.9%
Computer Occupations	6,458	0.9%
<b>Table Total</b>	<b>234,839</b>	<b>32.6%</b>

Table note: 2023 ACS PUMS (microdata). Only the top 20 occupations are included in this table. The data does not include unemployed veterans labor force participants. A total of 721,439 veterans were employed in 2023.

### Average Salaries of Texas Veteran Labor Force Participants

In 2023, Texas veteran labor force participants earned an average salary of \$76,129 (inflation adjusted for 2023). However, salary differences exist within the veteran population based on numerous demographic factors. On average, male veteran labor force participants earned \$78,671, whereas female veteran labor force participants earned \$59,336. Salaries also vary depending on the level of educational attainment. Table 17 illustrates that veteran labor force participants with a high school diploma or equivalent earned an average yearly salary of \$53,779. Average salary generally increases with higher levels of educational attainment. The highest average yearly salary was earned by veteran labor force participants with a master’s degree or higher. Veterans with an educational attainment level below the ninth grade tend to be associated with lower annual wages.

**Table 18: Average Yearly Salary for Texas Total Veteran Labor Force Participants by Educational Attainment, 2023**

Educational Attainment	Percent of Texas Veterans Labor Force Participants	Average Yearly Salary
Less than ninth grade	1.3%	\$43,347
Grade 9 through 12, no diploma	1.6%	\$41,662
High school graduate (includes equivalency)	20.7%	\$53,779
Some college, no degree	28.2%	\$62,645
Associate's degree	12.6%	\$65,129
Bachelor's degree	21.3%	\$90,956
Master's degree or higher	14.5%	\$124,355

Table note: 2023 ACS PUMS (microdata).

## Concluding Comments

This study has provided a demographic overview of veterans in the U.S. and Texas. A demographic description of the U.S. veteran population was first presented to provide context for the analysis of Texas veterans. The Texas veteran population was then detailed with a focus on disabilities and the characteristics of veteran labor force participants.

Both national and Texas data illustrate the decline in the veteran population due to the mortality of older veterans who served in the earlier service periods, namely World War II and Korea. Compared to nonveterans, the veteran population tends to be older, more educated, white, and male. Data also indicate that male veterans, including those in Texas, constitute a greater percentage of the veteran population for all periods of service.

The median age of a Texas veteran is 63 years old, and the largest number of Texas veterans served during Vietnam. The median age for a Texas veteran labor force participant is 52. The prevalence of disabilities is greater among veterans since the veteran population is older than the nonveteran population, and the likelihood of developing a disability increases with age.

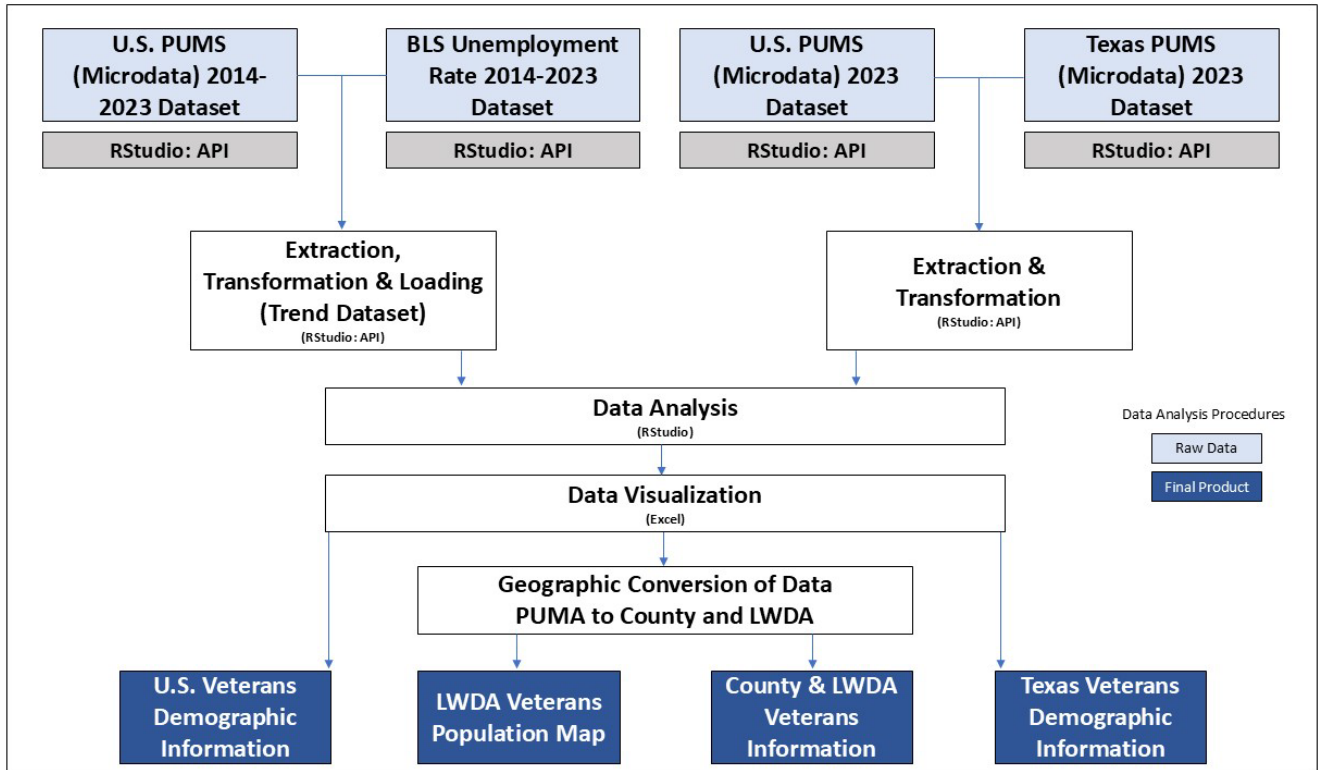
Overall, the analyses presented in this study illustrate the diversity of the veteran population according to age, educational attainment, and reported disabilities. The data illustrate that ambulatory difficulty is the most frequently reported disability by both veterans and nonveterans. The greatest percentage of service-connected disability rating is among Gulf War Era II veterans with 55.7 percent classified with a 70 to 100 percent service-connected disability rating. This indicates an upward trend from the previous reports (approximately 30 percent in 2016, 45 percent in 2021, and 50 percent in 2024).

The veteran population is a valuable resource for Texas employers and the Texas economy. The data provided in this demographic study is presented to assist policy makers and program planners in the design and implementation of relevant programs and services.

## References

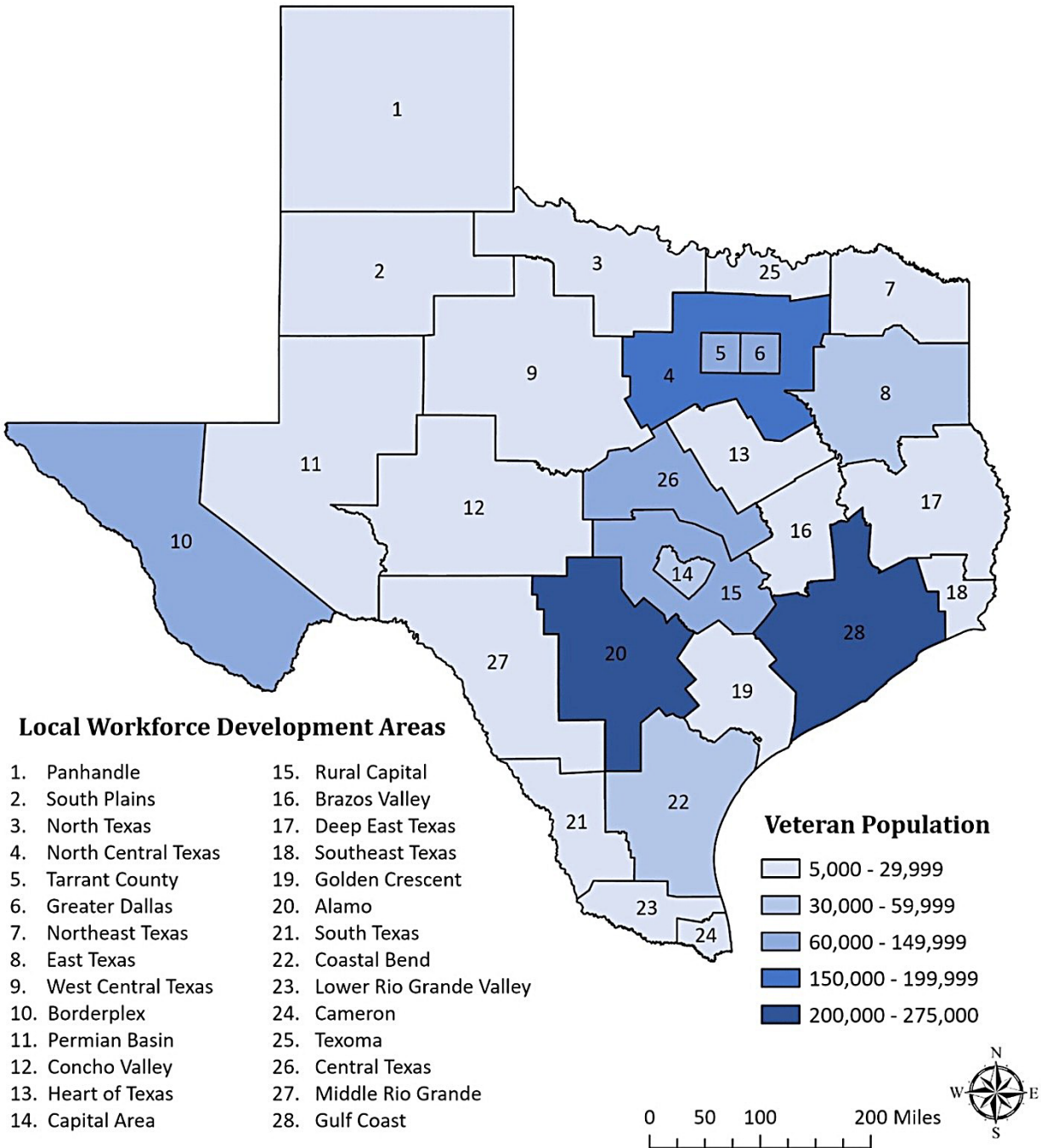
- Missouri Census Data Center. (2022). *MABLE / Geocorr22: Geographic correspondence engine*. Retrieved December 15, 2025, from <http://mcdc.missouri.edu/applications/geocorr2022.html>
- Texas Workforce Investment Council. (2025). *People with disabilities: A Texas profile*.  
<https://gov.texas.gov/uploads/files/organization/twic/People-With-Disabilities-2025.pdf>
- U.S. Bureau of Labor Statistics. (2023a). *Occupational Outlook Handbook: Military careers*.  
<https://www.bls.gov/ooh/military/military-careers.htm>
- U.S. Bureau of Labor Statistics. (2023b). *Labor force statistics from the Current Population Survey: Concepts and definitions*. <https://www.bls.gov/cps/definitions.htm>
- U.S. Bureau of Labor Statistics. (2024). *Employment situation of veterans: News release*.  
[https://www.bls.gov/news.release/archives/vet\\_03202024.pdf](https://www.bls.gov/news.release/archives/vet_03202024.pdf)
- U.S. Census Bureau. (2020). *Understanding and using American Community Survey data*.  
[https://www.census.gov/content/dam/Census/library/publications/2020/acs/acs\\_general\\_handbook\\_2020.pdf](https://www.census.gov/content/dam/Census/library/publications/2020/acs/acs_general_handbook_2020.pdf)
- U.S. Census Bureau. (2021). *Understanding and using the American Community Survey Public Use Microdata Sample files*.  
[https://www.census.gov/content/dam/Census/library/publications/2021/acs/acs\\_pums\\_handbook\\_2021.pdf](https://www.census.gov/content/dam/Census/library/publications/2021/acs/acs_pums_handbook_2021.pdf)
- U.S. Census Bureau. (2023). *In civilian labor force, total, percent (population of 16 years and over)*.  
<https://www.census.gov/quickfacts/fact/note/US/LFE041219>
- U.S. Department of Labor. (2023). *Frequently asked questions*. <https://www.dol.gov/general/faq>
- U.S. Department of Veterans Affairs. (2025). *Title 38 Code of Federal Regulations*.  
<https://www.benefits.va.gov/warms/topic-title38.asp>
- U.S. Equal Employment Opportunity Commission. (2025). *Understanding your employment rights under the Americans with Disabilities Act: A guide for veterans*.  
<https://www.eeoc.gov/laws/guidance/understanding-your-employment-rights-under-americans-disabilities-act-guide-veterans>

## Appendix A: Data Processing Framework



## Appendix B: Veterans in Texas by LWDA, 2023

Figure 8: Number of Veterans in Texas by LWDA, 2023



Source: U.S. Census Bureau  
Texas Workforce Investment Council

## Appendix C: Veterans by County in Each LWDA, 2023

This appendix illustrates the numbers of veterans by each county in the 28 local workforce development areas. The following tables illustrate the total, male, and female 2023 veteran population of each county. Additionally, the numbers of veterans are presented by age categories (18 to 34, 35 to 54, 55 to 64, 65 to 74, 75 and up). The estimated numbers of veterans are from ACS PUMS (microdata) files. For more information on how county estimates were calculated, see the explanation in the Data Sources section of this report.

**Table 19: LWDA 1 Panhandle – Veterans by County, 2023**

County	Total Veteran Population	Male Veteran Population	Female Veteran Population	18-34 Years	35-54 Years	55-64 Years	65-74 Years	75+ Years
Armstrong	79	73	6	9	20	10	21	19
Briscoe	61	57	5	7	15	8	16	15
Carson	248	230	18	29	63	31	65	61
Castro	315	291	23	37	79	39	82	77
Childress	285	264	21	33	72	35	75	70
Collingsworth	113	105	8	13	28	14	30	28
Dallam	303	281	22	36	76	38	80	74
Deaf Smith	793	734	59	93	200	99	208	194
Donley	139	129	10	16	35	17	36	34
Gray	906	839	67	106	228	113	237	222
Hall	120	111	9	14	30	15	32	29
Hansford	226	209	17	26	57	28	59	55
Hartley	229	213	17	27	58	29	60	56
Hemphill	144	134	11	17	36	18	38	35
Hutchinson	880	815	65	103	222	109	231	215
Lipscomb	131	121	10	15	33	16	34	32
Moore	912	844	67	107	230	113	239	223
Ochiltree	428	396	32	50	108	53	112	105
Oldham	75	69	6	9	19	9	20	18
Parmer	422	390	31	49	106	52	110	103
Potter	5,315	4,633	682	655	1,510	1,003	1,117	1,030
Randall	10,071	9,220	851	1,283	3,431	1,401	2,164	1,792
Roberts	35	33	3	4	9	4	9	9
Sherman	119	110	9	14	30	15	31	29
Swisher	297	275	22	35	75	37	78	73
Wheeler	213	197	16	25	54	26	56	52
<b>Panhandle Total</b>	<b>22,859</b>	<b>20,773</b>	<b>2,087</b>	<b>2,812</b>	<b>6,824</b>	<b>3,332</b>	<b>5,240</b>	<b>4,650</b>

**Table 20: LWDA 2 South Plains – Veterans by County, 2023**

County	Total Veteran Population	Male Veteran Population	Female Veteran Population	18-34 Years	35-54 Years	55-64 Years	65-74 Years	75+ Years
Bailey	235	213	23	12	57	45	51	69
Cochran	87	78	8	4	21	17	19	25
Crosby	175	158	17	9	42	34	38	51
Dickens	60	54	6	3	15	12	13	18
Floyd	184	166	18	9	45	36	40	54
Garza	198	179	19	10	48	38	43	58
Hale	1,108	1,001	107	56	268	214	239	325
Hockley	734	663	71	37	177	142	158	215
King	9	8	1	0	2	2	2	3
Lamb	444	402	43	22	107	86	96	130
Lubbock	12,651	11,395	1,256	1,768	3,352	2,158	2,699	2,674
Lynn	191	172	18	10	46	37	41	56
Motley	36	33	4	2	9	7	8	11
Terry	403	364	39	20	98	78	87	118
Yoakum	262	237	25	13	63	51	57	77
<b>South Plains Total</b>	<b>16,777</b>	<b>15,123</b>	<b>1,655</b>	<b>1,975</b>	<b>4,350</b>	<b>2,957</b>	<b>3,591</b>	<b>3,884</b>

**Table 2: LWDA 3 North Texas – Veterans by County, 2023**

County	Total Veteran Population	Male Veteran Population	Female Veteran Population	18-34 Years	35-54 Years	55-64 Years	65-74 Years	75+ Years
Archer	546	501	45	54	154	97	129	113
Baylor	221	203	18	22	62	39	52	46
Clay	653	599	54	64	184	116	154	135
Cottle	88	80	7	9	25	16	21	18
Foard	70	64	6	7	20	12	16	14
Hardeman	226	208	19	22	64	40	53	47
Jack	541	496	45	53	152	96	128	112
Montague	1,275	1,169	106	125	359	227	301	263
Wichita	16,101	13,770	2,331	6,308	4,286	1,732	1,904	1,692
Wilbarger	824	755	68	81	232	147	194	170
Young	1,142	1,047	95	112	321	203	269	236
<b>North Texas Total</b>	<b>21,687</b>	<b>18,892</b>	<b>2,794</b>	<b>6,857</b>	<b>5,859</b>	<b>2,725</b>	<b>3,221</b>	<b>2,846</b>

**Table 22: LWDA 4 North Central Texas – Veterans by County, 2023**

County	Total Veteran Population	Male Veteran Population	Female Veteran Population	18-34 Years	35-54 Years	55-64 Years	65-74 Years	75+ Years
Collin	40,917	37,037	3,880	3,824	13,751	7,704	7,399	8,239
Denton	44,181	39,679	4,502	5,078	16,157	8,216	7,248	7,482
Ellis	11,101	9,611	1,490	1,133	4,028	1,755	2,422	1,763
Erath	2,793	2,497	296	191	694	392	745	772
Hood	4,044	3,615	429	277	1,004	567	1,078	1,118
Hunt	6,289	5,667	622	804	1,779	1,107	1,337	1,262
Johnson	8,716	7,682	1,034	1,303	2,393	1,544	1,709	1,767
Kaufman	7,098	6,362	736	922	2,369	1,187	1,471	1,149
Navarro	3,225	2,888	338	153	775	529	976	793
Palo Pinto	1,865	1,667	198	128	463	262	497	516
Parker	12,460	10,792	1,668	1,256	4,090	2,152	2,661	2,271
Rockwall	6,784	6,113	671	868	1,918	1,195	1,442	1,361
Somervell	604	540	64	41	150	85	161	167
Wise	4,384	4,020	365	431	1,233	780	1,034	905
<b>North Central Texas Total</b>	<b>154,461</b>	<b>138,170</b>	<b>16,293</b>	<b>16,409</b>	<b>50,804</b>	<b>27,475</b>	<b>30,180</b>	<b>29,565</b>

**Table 23: LWDA 5 Tarrant County – Veterans by County, 2023**

County	Total Veteran Population	Male Veteran Population	Female Veteran Population	18-34 Years	35-54 Years	55-64 Years	65-74 Years	75+ Years
Tarrant	103,061	89,984	13,077	14,275	29,254	19,835	20,626	19,052
<b>Tarrant County Total</b>	<b>103,061</b>	<b>89,984</b>	<b>13,077</b>	<b>14,275</b>	<b>29,254</b>	<b>19,835</b>	<b>20,626</b>	<b>19,052</b>

**Table 24: LWDA 6 Greater Dallas – Veterans by County, 2023**

County	Total Veteran Population	Male Veteran Population	Female Veteran Population	18-34 Years	35-54 Years	55-64 Years	65-74 Years	75+ Years
Dallas	81,981	72,653	9,328	10,356	22,016	15,140	17,632	16,837
<b>Greater Dallas Total</b>	<b>81,981</b>	<b>72,653</b>	<b>9,328</b>	<b>10,356</b>	<b>22,016</b>	<b>15,140</b>	<b>17,632</b>	<b>16,837</b>

**Table 25: LWDA 7 Northeast Texas – Veterans by County, 2023**

County	Total Veteran Population	Male Veteran Population	Female Veteran Population	18-34 Years	35-54 Years	55-64 Years	65-74 Years	75+ Years
Bowie	5,869	5,348	521	506	1,239	892	1,653	1,579
Cass	1,798	1,638	160	155	380	273	506	484
Delta	295	273	21	34	62	48	84	67
Franklin	583	541	42	66	124	94	165	133
Hopkins	2,069	1,920	148	236	439	334	587	473
Lamar	2,817	2,615	202	321	597	455	799	644
Morris	673	625	48	77	143	109	191	154
Red River	652	605	47	74	138	105	185	149
Titus	1,757	1,631	126	200	373	284	499	402
<b>Northeast Texas Total</b>	<b>16,513</b>	<b>15,196</b>	<b>1,315</b>	<b>1,669</b>	<b>3,495</b>	<b>2,594</b>	<b>4,669</b>	<b>4,085</b>

**Table 26: LWDA 8 East Texas – Veterans by County, 2023**

County	Total Veteran Population	Male Veteran Population	Female Veteran Population	18-34 Years	35-54 Years	55-64 Years	65-74 Years	75+ Years
Anderson	3,718	3,345	373	306	887	523	1,022	980
Camp	996	920	75	52	216	177	278	273
Cherokee	2,714	2,458	257	176	726	396	704	713
Gregg	6,052	5,432	620	576	1,668	794	1,461	1,553
Harrison	4,422	3,941	481	368	1,123	822	1,079	1,029
Henderson	5,273	4,744	529	434	1,258	741	1,450	1,390
Marion	625	557	68	52	159	116	152	145
Panola	1,211	1,097	115	79	324	177	314	318
Rains	972	898	73	51	211	173	271	266
Rusk	2,811	2,546	266	182	752	410	729	739
Smith	10,780	9,530	1,250	1,065	2,195	1,342	3,409	2,760
Upshur	2,626	2,341	286	218	667	488	641	611
Van Zandt	4,756	4,397	360	251	1,031	846	1,326	1,302
Wood	3,582	3,312	271	189	777	637	999	981
<b>East Texas Total</b>	<b>50,538</b>	<b>45,518</b>	<b>5,024</b>	<b>3,999</b>	<b>11,994</b>	<b>7,642</b>	<b>13,835</b>	<b>13,060</b>

**Table 27: LWDA 9 West Central Texas – Veterans by County, 2023**

County	Total Veteran Population	Male Veteran Population	Female Veteran Population	18-34 Years	35-54 Years	55-64 Years	65-74 Years	75+ Years
Brown	2,106	1,933	173	142	476	356	541	591
Callahan	758	696	62	51	171	128	195	213
Coleman	425	390	35	29	96	72	109	119
Comanche	752	690	62	51	170	127	193	211
Eastland	980	899	81	66	221	166	252	275
Fisher	203	186	17	14	46	34	52	57
Haskell	299	274	25	20	68	51	77	84
Jones	1,088	998	90	73	246	184	280	305
Kent	42	38	3	3	9	7	11	12
Knox	185	170	15	12	42	31	48	52
Mitchell	497	456	41	33	112	84	128	139
Nolan	815	748	67	55	184	138	209	228
Runnels	547	502	45	37	124	92	141	153
Scurry	936	859	77	63	211	158	241	263
Shackelford	171	157	14	12	39	29	44	48
Stephens	503	462	41	34	114	85	129	141
Stonewall	69	63	6	5	16	12	18	19
Taylor	14,495	12,619	1,876	4,817	4,442	1,501	1,734	2,001
Throckmorton	79	73	7	5	18	13	20	22
<b>West Central Texas Total</b>	<b>24,950</b>	<b>22,213</b>	<b>2,737</b>	<b>5,522</b>	<b>6,805</b>	<b>3,268</b>	<b>4,422</b>	<b>4,933</b>

**Table 28: LWDA 10 Borderplex – Veterans by County, 2023**

County	Total Veteran Population	Male Veteran Population	Female Veteran Population	18-34 Years	35-54 Years	55-64 Years	65-74 Years	75+ Years
Brewster	331	314	17	30	110	30	109	52
Culberson	76	72	4	7	25	7	25	12
El Paso	64,845	56,937	7,908	22,908	19,730	8,023	7,585	6,579
Hudspeth	111	105	6	10	37	10	37	17
Jeff Davis	69	66	4	6	23	6	23	11
Presidio	213	202	11	19	71	19	70	33
<b>Borderplex Total</b>	<b>65,645</b>	<b>57,696</b>	<b>7,950</b>	<b>22,980</b>	<b>19,996</b>	<b>8,095</b>	<b>7,849</b>	<b>6,704</b>

**Table 29: LWDA 11 Permian Basin – Veterans by County, 2023**

County	Total Veteran Population	Male Veteran Population	Female Veteran Population	18-34 Years	35-54 Years	55-64 Years	65-74 Years	75+ Years
Andrews	645	612	33	58	215	59	213	101
Borden	27	24	3	1	8	4	6	7
Crane	162	154	8	14	54	15	53	25
Dawson	527	469	58	27	162	74	121	143
Ector	5,494	4,878	616	934	1,876	617	1,218	849
Gaines	749	710	38	67	250	68	247	117
Glasscock	47	42	5	2	15	7	11	13
Howard	1,476	1,313	163	75	454	208	339	399
Loving	2	2	0	0	1	0	1	0
Martin	222	197	24	11	68	31	51	60
Midland	6,199	5,426	773	588	2,559	860	822	1,370
Pecos	643	572	71	33	198	91	148	174
Reeves	511	485	26	46	171	46	169	80
Terrell	32	29	4	2	10	5	7	9
Upton	140	124	15	7	43	20	32	38
Ward	404	383	21	36	135	37	133	63
Winkler	270	256	14	24	90	25	89	42
<b>Permian Basin Total</b>	<b>17,550</b>	<b>15,676</b>	<b>1,872</b>	<b>1,925</b>	<b>6,309</b>	<b>2,167</b>	<b>3,660</b>	<b>3,490</b>

**Table 30: LWDA 12 Concho Valley – Veterans by County, 2023**

County	Total Veteran Population	Male Veteran Population	Female Veteran Population	18-34 Years	35-54 Years	55-64 Years	65-74 Years	75+ Years
Coke	139	124	15	7	43	20	32	38
Concho	140	124	15	7	43	20	32	38
Crockett	131	117	14	7	40	19	30	36
Irion	64	57	7	3	20	9	15	17
Kimble	182	162	20	9	56	26	42	49
Mason	167	149	18	8	51	24	38	45
McCulloch	323	287	36	16	99	46	74	87
Menard	83	74	9	4	26	12	19	22
Reagan	143	127	16	7	44	20	33	39
Schleicher	104	92	11	5	32	15	24	28
Sterling	58	52	6	3	18	8	13	16
Sutton	143	127	16	7	44	20	33	39
Tom Green	11,075	9,535	1,540	3,520	2,630	1,467	1,858	1,600
<b>Concho Valley Total</b>	<b>12,752</b>	<b>11,027</b>	<b>1,723</b>	<b>3,603</b>	<b>3,146</b>	<b>1,706</b>	<b>2,243</b>	<b>2,054</b>

**Table 3: LWDA 13 Heart of Texas – Veterans by County, 2023**

County	Total Veteran Population	Male Veteran Population	Female Veteran Population	18-34 Years	35-54 Years	55-64 Years	65-74 Years	75+ Years
Bosque	1,117	1,000	117	53	268	183	338	275
Falls	1,040	931	109	49	250	171	315	256
Freestone	1,191	1,067	125	57	286	195	360	293
Hill	2,198	1,968	230	104	528	360	665	540
Limestone	1,357	1,215	142	64	326	223	411	334
McLennan	14,343	12,782	1,561	1,833	4,127	2,185	3,003	3,195
<b>Heart of Texas Total</b>	<b>21,246</b>	<b>18,963</b>	<b>2,284</b>	<b>2,160</b>	<b>5,785</b>	<b>3,317</b>	<b>5,092</b>	<b>4,893</b>

**Table 32: LWDA 14 Capital Area – Veterans by County, 2023**

County	Total Veteran Population	Male Veteran Population	Female Veteran Population	18-34 Years	35-54 Years	55-64 Years	65-74 Years	75+ Years
Travis	48,585	42,939	5,646	6,013	15,705	8,499	9,278	9,090
<b>Capital Area Total</b>	<b>48,585</b>	<b>42,939</b>	<b>5,646</b>	<b>6,013</b>	<b>15,705</b>	<b>8,499</b>	<b>9,278</b>	<b>9,090</b>

**Table 33: LWDA 15 Rural Capital Area – Veterans by County, 2023**

County	Total Veteran Population	Male Veteran Population	Female Veteran Population	18-34 Years	35-54 Years	55-64 Years	65-74 Years	75+ Years
Bastrop	6,420	5,821	599	786	1,355	989	1,877	1,413
Blanco	881	795	85	71	151	116	245	297
Burnet	7,657	6,570	1,087	2,762	2,005	817	1,057	1,013
Caldwell	3,030	2,747	283	371	639	467	886	667
Fayette	1,614	1,463	151	198	341	249	472	355
Hays	13,252	11,441	1,811	1,476	4,708	2,113	2,755	2,200
Lee	1,155	1,047	108	141	244	178	338	254
Llano	3,311	2,841	470	1,194	867	353	457	438
Williamson	39,674	34,831	4,843	5,488	13,533	6,516	7,097	6,949
<b>Rural Capital Total</b>	<b>76,994</b>	<b>67,556</b>	<b>9,437</b>	<b>12,487</b>	<b>23,843</b>	<b>11,798</b>	<b>15,184</b>	<b>13,586</b>

**Table 34: LWDA 16 Brazos Valley – Veterans by County, 2023**

County	Total Veteran Population	Male Veteran Population	Female Veteran Population	18-34 Years	35-54 Years	55-64 Years	65-74 Years	75+ Years
Brazos	8,080	7,357	723	1,734	1,983	778	1,792	1,793
Burleson	1,009	911	98	96	237	151	247	277
Grimes	1,675	1,512	163	160	394	251	410	460
Leon	900	812	88	86	211	135	220	247
Madison	770	695	75	73	181	115	188	212
Robertson	959	865	93	92	225	144	235	263
Washington	2,049	1,849	199	196	482	307	502	563
<b>Brazos Valley Total</b>	<b>15,442</b>	<b>14,001</b>	<b>1,439</b>	<b>2,437</b>	<b>3,713</b>	<b>1,881</b>	<b>3,594</b>	<b>3,815</b>

**Table 35: LWDA 17 Deep East Texas – Veterans by County, 2023**

County	Total Veteran Population	Male Veteran Population	Female Veteran Population	18-34 Years	35-54 Years	55-64 Years	65-74 Years	75+ Years
Angelina	4,390	4,076	313	243	1,176	784	1,212	957
Houston	1,408	1,283	125	139	308	248	367	346
Jasper	1,980	1,812	168	88	419	269	653	545
Nacogdoches	3,284	3,050	235	181	880	586	907	716
Newton	734	672	62	32	155	100	242	202
Polk	3,198	2,914	285	315	699	563	834	787
Sabine	594	544	50	26	126	81	196	163
San Augustine	475	435	40	21	101	65	157	131
San Jacinto	1,748	1,592	156	172	382	308	456	430
Shelby	1,443	1,320	122	64	305	196	476	397
Trinity	867	790	77	86	190	153	226	213
Tyler	1,189	1,088	101	53	251	161	392	327
<b>Deep East Texas Total</b>	<b>21,310</b>	<b>19,576</b>	<b>1,734</b>	<b>1,420</b>	<b>4,992</b>	<b>3,514</b>	<b>6,118</b>	<b>5,214</b>

**Table 36: LWDA 18 Southeast Texas – Veterans by County, 2023**

County	Total Veteran Population	Male Veteran Population	Female Veteran Population	18-34 Years	35-54 Years	55-64 Years	65-74 Years	75+ Years
Hardin	2,851	2,655	195	325	802	431	629	664
Jefferson	12,273	10,950	1,323	1,000	3,515	2,287	2,530	2,941
Orange	4,299	4,005	295	489	1,210	649	949	1,002
<b>Southeast Texas Total</b>	<b>19,423</b>	<b>17,610</b>	<b>1,813</b>	<b>1,814</b>	<b>5,527</b>	<b>3,367</b>	<b>4,108</b>	<b>4,607</b>

**Table 37: LWDA 19 Golden Crescent – Veterans by County, 2023**

County	Total Veteran Population	Male Veteran Population	Female Veteran Population	18-34 Years	35-54 Years	55-64 Years	65-74 Years	75+ Years
Calhoun	1,152	1,090	62	168	218	172	292	301
Dewitt	1,198	1,079	119	60	332	251	301	254
Goliad	423	381	42	21	117	89	106	90
Gonzales	1,188	1,070	118	60	329	249	299	252
Jackson	906	816	90	45	251	190	228	192
Lavaca	1,228	1,107	122	62	340	257	309	260
Victoria	5,232	4,950	282	766	992	779	1,327	1,369
<b>Golden Crescent Total</b>	<b>11,327</b>	<b>10,493</b>	<b>835</b>	<b>1,182</b>	<b>2,579</b>	<b>1,987</b>	<b>2,862</b>	<b>2,718</b>

**Table 38: LWDA 20 Alamo – Veterans by County, 2023**

County	Total Veteran Population	Male Veteran Population	Female Veteran Population	18-34 Years	35-54 Years	55-64 Years	65-74 Years	75+ Years
Atascosa	3,884	3,455	429	205	1,153	920	853	753
Bandera	1,653	1,470	183	87	490	392	363	320
Bexar	170,569	140,422	30,147	34,901	55,243	28,957	29,118	22,129
Comal	16,461	14,174	2,287	1,245	4,642	3,951	3,805	2,818
Frio	1,458	1,297	161	77	433	345	320	283
Gillespie	2,069	1,868	201	168	355	273	576	697
Guadalupe	19,847	16,233	3,614	1,641	7,836	4,563	3,224	2,583
Karnes	889	801	88	45	246	186	224	189
Kendall	3,428	3,096	332	278	589	453	954	1,155
Kerr	4,072	3,677	395	330	699	538	1,133	1,372
McMullen	13	12	1	2	2	3	3	3
Medina	4,024	3,579	445	213	1,194	953	884	780
Wilson	3,006	2,708	298	151	833	630	756	637
<b>Alamo Total</b>	<b>231,373</b>	<b>192,792</b>	<b>38,581</b>	<b>39,343</b>	<b>73,715</b>	<b>42,164</b>	<b>42,213</b>	<b>33,719</b>

**Table 39: LWDA 21 South Texas – Veterans by County, 2023**

County	Total Veteran Population	Male Veteran Population	Female Veteran Population	18-34 Years	35-54 Years	55-64 Years	65-74 Years	75+ Years
Jim Hogg	104	95	8	15	20	24	22	23
Webb	5,864	5,543	321	731	1,860	988	939	1,346
Zapata	298	274	24	44	56	69	63	65
<b>South Texas Total</b>	<b>6,266</b>	<b>5,912</b>	<b>353</b>	<b>790</b>	<b>1,936</b>	<b>1,081</b>	<b>1,024</b>	<b>1,434</b>

**Table 40: LWDA 22 Coastal Bend – Veterans by County, 2023**

County	Total Veteran Population	Male Veteran Population	Female Veteran Population	18-34 Years	35-54 Years	55-64 Years	65-74 Years	75+ Years
Aransas	1,669	1,506	163	155	419	322	377	396
Bee	2,174	1,961	212	202	545	420	491	516
Brooks	364	336	28	71	96	54	82	62
Duval	211	194	17	31	40	49	45	46
Jim Wells	2,002	1,846	156	391	526	297	451	338
Kenedy	18	17	1	3	5	3	4	3
Kleberg	1,598	1,473	125	312	420	237	360	270
Live Oak	583	538	45	114	153	86	131	99
Nueces	24,203	21,917	2,286	3,372	7,098	3,830	5,416	4,487
Refugio	472	426	46	44	118	91	107	112
San Patricio	4,815	4,345	470	448	1,208	929	1,087	1,142
<b>Coastal Bend Total</b>	<b>38,109</b>	<b>34,559</b>	<b>3,549</b>	<b>5,143</b>	<b>10,628</b>	<b>6,318</b>	<b>8,551</b>	<b>7,471</b>

**Table 41: LWDA 23 Lower Rio Grande Valley – Veterans by County, 2023**

County	Total Veteran Population	Male Veteran Population	Female Veteran Population	18-34 Years	35-54 Years	55-64 Years	65-74 Years	75+ Years
Hidalgo	19,248	17,387	1,861	2,321	5,405	2,479	4,127	4,916
Starr	1,412	1,299	113	211	268	326	299	309
Willacy	1,038	957	81	202	273	154	234	175
<b>Lower Rio Grande Valley Total</b>	<b>21,698</b>	<b>19,643</b>	<b>2,055</b>	<b>2,734</b>	<b>5,946</b>	<b>2,959</b>	<b>4,660</b>	<b>5,400</b>

**Table 42: LWDA 24 Cameron – Veterans by County, 2023**

County	Total Veteran Population	Male Veteran Population	Female Veteran Population	18-34 Years	35-54 Years	55-64 Years	65-74 Years	75+ Years
Cameron	13,265	11,964	1,301	1,318	3,706	1,911	3,168	3,150
<b>Cameron Total</b>	<b>13,265</b>	<b>11,964</b>	<b>1,301</b>	<b>1,318</b>	<b>3,706</b>	<b>1,911</b>	<b>3,168</b>	<b>3,150</b>

**Table 43: LWDA 25 Texoma – Veterans by County, 2023**

County	Total Veteran Population	Male Veteran Population	Female Veteran Population	18-34 Years	35-54 Years	55-64 Years	65-74 Years	75+ Years
Cooke	2,811	2,532	279	260	636	457	829	629
Fannin	2,406	2,167	239	222	545	391	709	539
Grayson	9,146	8,238	908	845	2,070	1,487	2,696	2,047
<b>Texoma Total</b>	<b>14,363</b>	<b>12,937</b>	<b>1,426</b>	<b>1,327</b>	<b>3,251</b>	<b>2,335</b>	<b>4,234</b>	<b>3,215</b>

**Table 44: LWDA 26 Central Texas – Veterans by County, 2023**

County	Total Veteran Population	Male Veteran Population	Female Veteran Population	18-34 Years	35-54 Years	55-64 Years	65-74 Years	75+ Years
Bell	69,972	55,567	14,405	25,653	23,578	9,241	7,097	4,332
Coryell	12,950	11,112	1,838	4,671	3,391	1,381	1,788	1,713
Hamilton	1,282	1,100	182	462	336	137	177	170
Lampasas	3,372	2,893	479	1,216	883	360	466	446
Milam	1,417	1,279	138	135	333	212	347	389
Mills	694	595	98	250	182	74	96	92
San Saba	893	766	127	322	234	95	123	118
<b>Central Texas Total</b>	<b>90,580</b>	<b>73,312</b>	<b>17,267</b>	<b>32,709</b>	<b>28,937</b>	<b>11,500</b>	<b>10,094</b>	<b>7,260</b>

**Table 45: LWDA 27 Middle Rio Grande – Veterans by County, 2023**

County	Total Veteran Population	Male Veteran Population	Female Veteran Population	18-34 Years	35-54 Years	55-64 Years	65-74 Years	75+ Years
Dimmit	185	170	15	28	35	43	39	40
Edwards	73	65	8	22	18	10	11	11
Kinney	161	144	18	49	40	23	25	24
La Salle	143	131	11	21	27	33	30	31
Maverick	2,981	2,656	325	903	746	426	456	451
Real	142	127	16	43	36	20	22	22
Uvalde	1,265	1,127	138	383	317	181	193	191
Val Verde	2,451	2,184	267	742	614	350	375	371
Zavala	498	444	54	151	125	71	76	75
<b>Middle Rio Grande Total</b>	<b>7,899</b>	<b>7,048</b>	<b>852</b>	<b>2,342</b>	<b>1,958</b>	<b>1,157</b>	<b>1,227</b>	<b>1,216</b>

**Table 46: LWDA 28 Gulf Coast – Veterans by County, 2023**

County	Total Veteran Population	Male Veteran Population	Female Veteran Population	18-34 Years	35-54 Years	55-64 Years	65-74 Years	75+ Years
Austin	1,343	1,167	176	112	350	210	359	311
Brazoria	17,290	15,095	2,195	1,958	5,926	2,285	3,880	3,241
Chambers	2,450	2,228	222	148	901	250	599	528
Colorado	915	795	120	76	239	143	245	212
Fort Bend	27,601	23,653	3,948	2,099	10,180	4,214	6,248	4,860
Galveston	20,839	18,238	2,601	2,199	6,260	3,433	4,782	4,165
Harris	152,982	134,266	18,716	20,682	45,975	26,127	30,210	29,908
Liberty	4,820	4,382	438	292	1,773	492	1,179	1,038
Matagorda	1,614	1,402	211	135	421	253	431	374
Montgomery	33,970	29,999	3,971	3,951	12,274	5,096	6,292	6,336
Walker	4,875	4,441	434	481	1,065	858	1,272	1,199
Waller	2,528	2,197	331	211	659	396	676	586
Wharton	1,850	1,608	242	155	483	290	495	429
<b>Gulf Coast Total</b>	<b>273,077</b>	<b>239,471</b>	<b>33,605</b>	<b>32,499</b>	<b>86,506</b>	<b>44,047</b>	<b>56,668</b>	<b>53,187</b>