

# "THERE WILL BE BLOOD"

TEXAS FILM OFFICE  
LOCATION REFERENCE PHOTOGRAPHS

March 25, 2005



## "THERE WILL BE BLOOD"

### TEXAS FILM OFFICE LOCATION REFERENCE PHOTOGRAPHS

<u>ID #</u>	<u>PHOTOGRAPH NAME</u>
039	Railroad_Track_Kern
038	Southern_Pacific_Railroad_Line_McKittrick
201	Borel_Canal_Construction_Camp_1904
019	CA_Union_Oil_Individual_Wells
015	CA_Union_Oil_Wells_Derricks_1890
017	CA_Union_Oil_Wells_Torrey_Canyon_1897
270	Derricks_And_Outbuildings_In_Hills
036	Drilling_In_Arroyos_McKittrick
239	The_Great_Overland_Mail_Station_In_Fountain_Springs_1930
079	Torrey_Canyon_Field
290	Crew_Laying_Pipe_To_Midway_Sunset_Field_1913
083	Hardy_Pipeline_Construction_Crew
298	Pipelining_In_Central_California_1909
145	Auto_Driving_Down_Wilshire_Blvd._Los_Angeles_Circa_1920
154	Artesian_Well_At_Tree_Ranch_Tulare_County
258	Water_Well_Men_Cast_Reference
377	Paul_Scout_Photo_Dirt_Road_In_Hills_Location_Reference

PAI

ATI

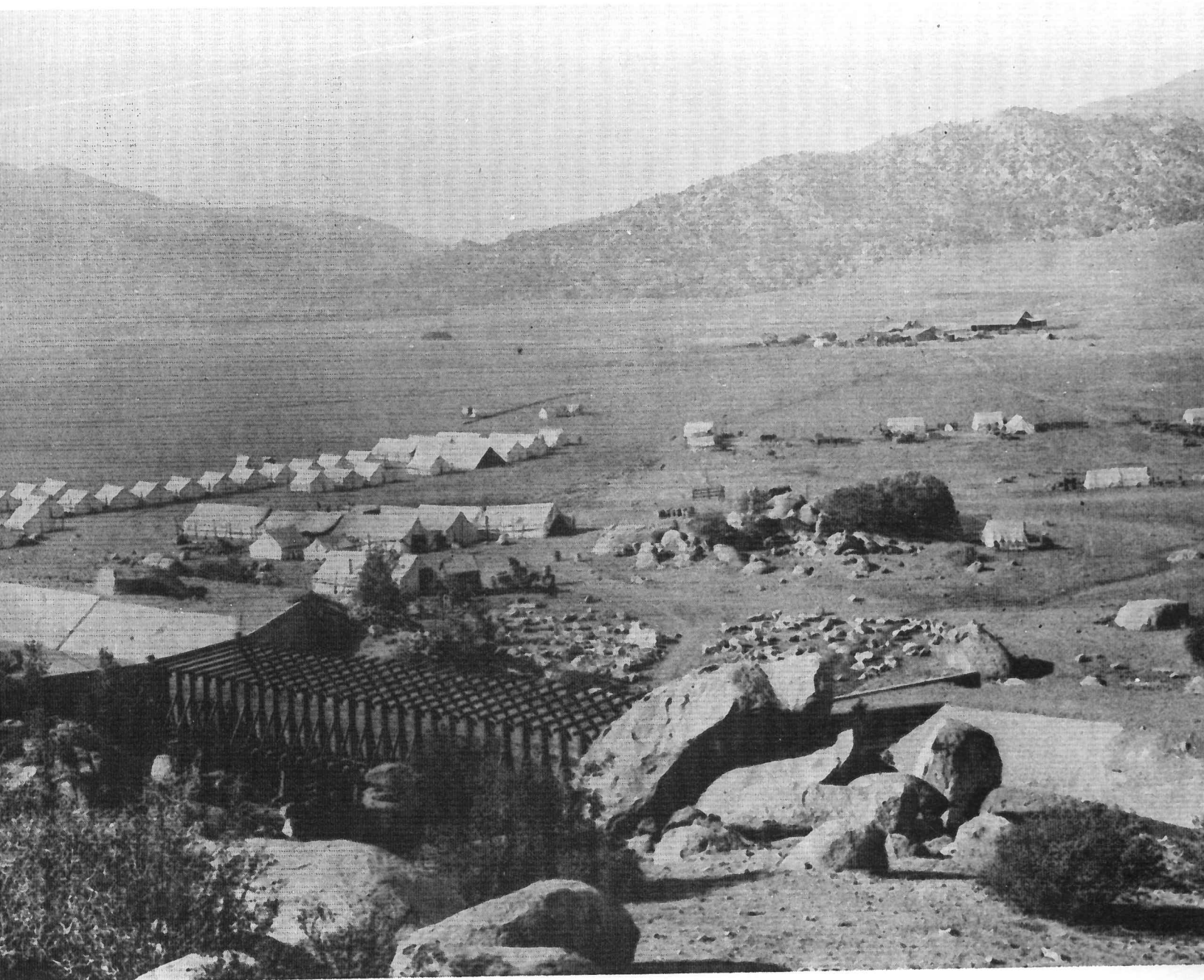


J 02/86





The Southern Pacific Railroad's spur line into McKittrick allowed supplies to be shipped into the field inexpensively. Because of the dry climate that retarded spoilage, the material usually was simply stacked by the side of the tracks until it was needed. Notice the McKittrick Oil Exchange in the background, which offered area oil men the latest quotes on oil prices from the telegraph stretching alongside the railroad tracks. *Standard Oil Company of California*

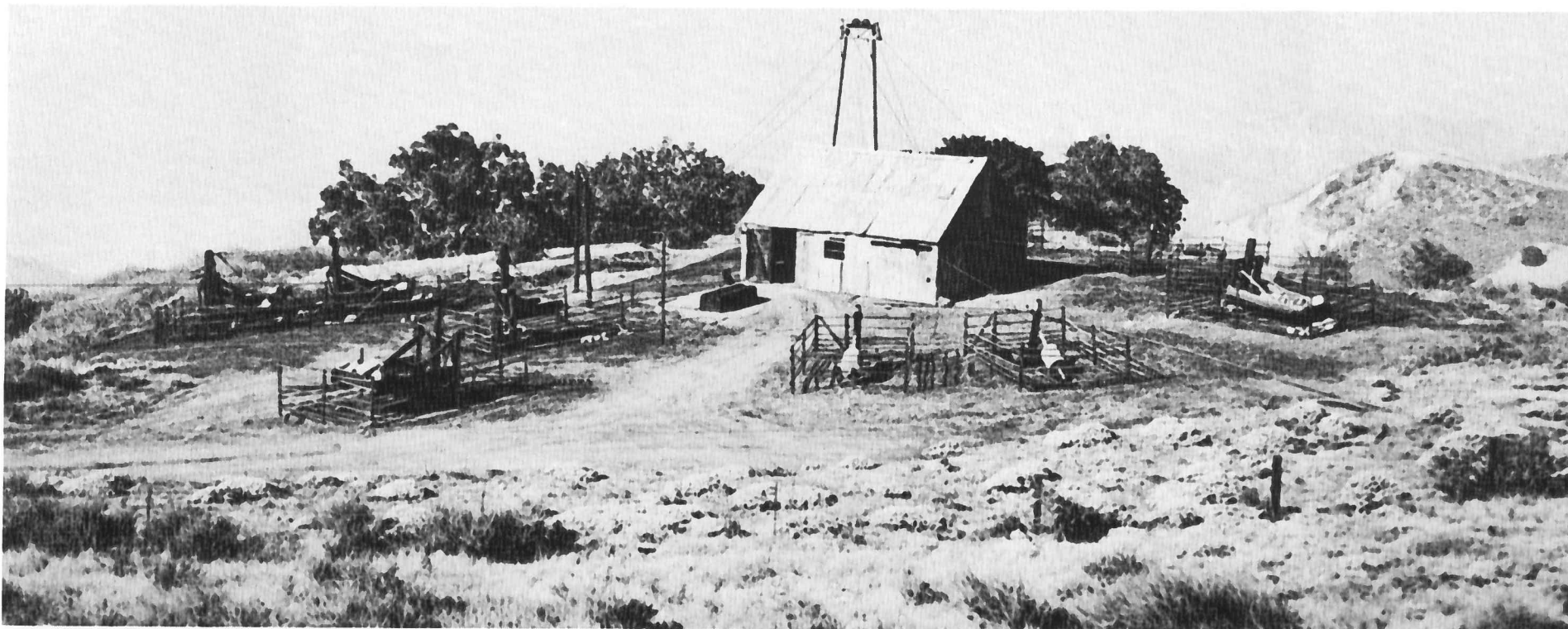


**Construction camp for the construction of Borel Canal, Hot Springs Valley 1904. Looking west, Hot Springs House in background.**



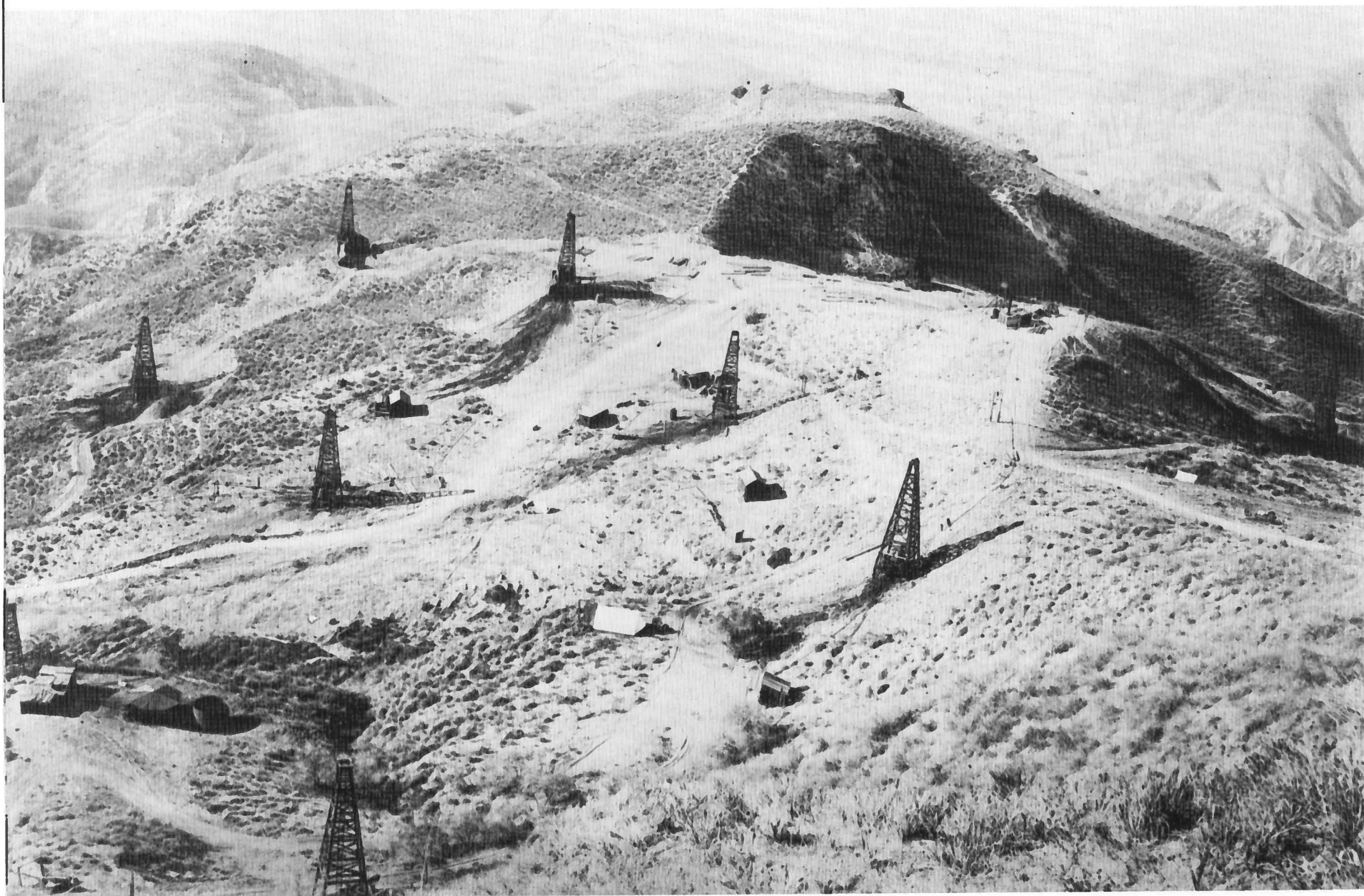


Union Oil Company wells near Tar Creek, some of the company's best producers during the 1880s and 1890s, were actually relatively insignificant compared with wells yet to be discovered in the region.  
*Union Oil Company of California*

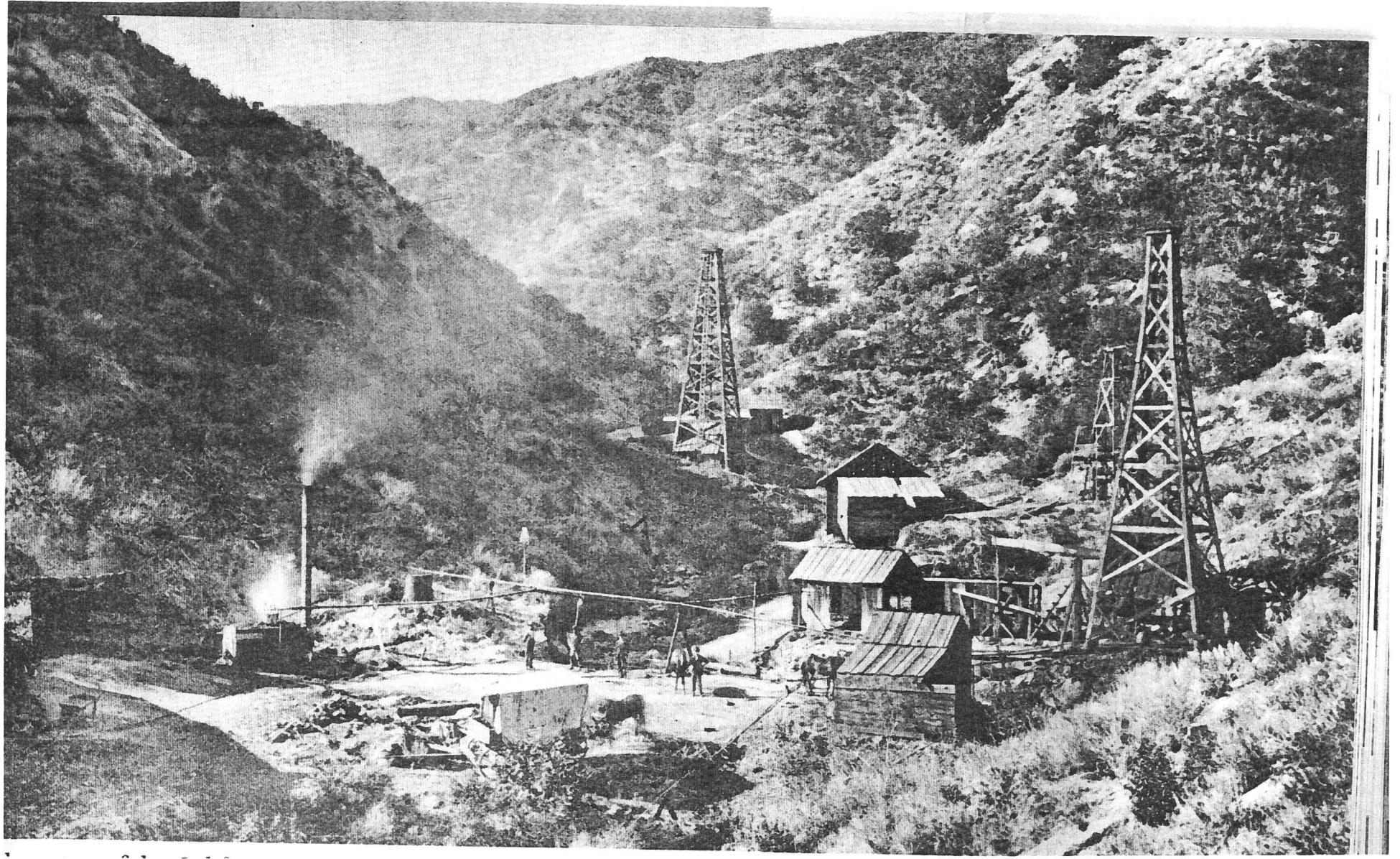


The individual wells are being powered by lines running from a single eccentric wheel located in the sheet-iron building. To keep roaming cattle out of the well sites, each well has been fenced. *Union Oil Company of California.*

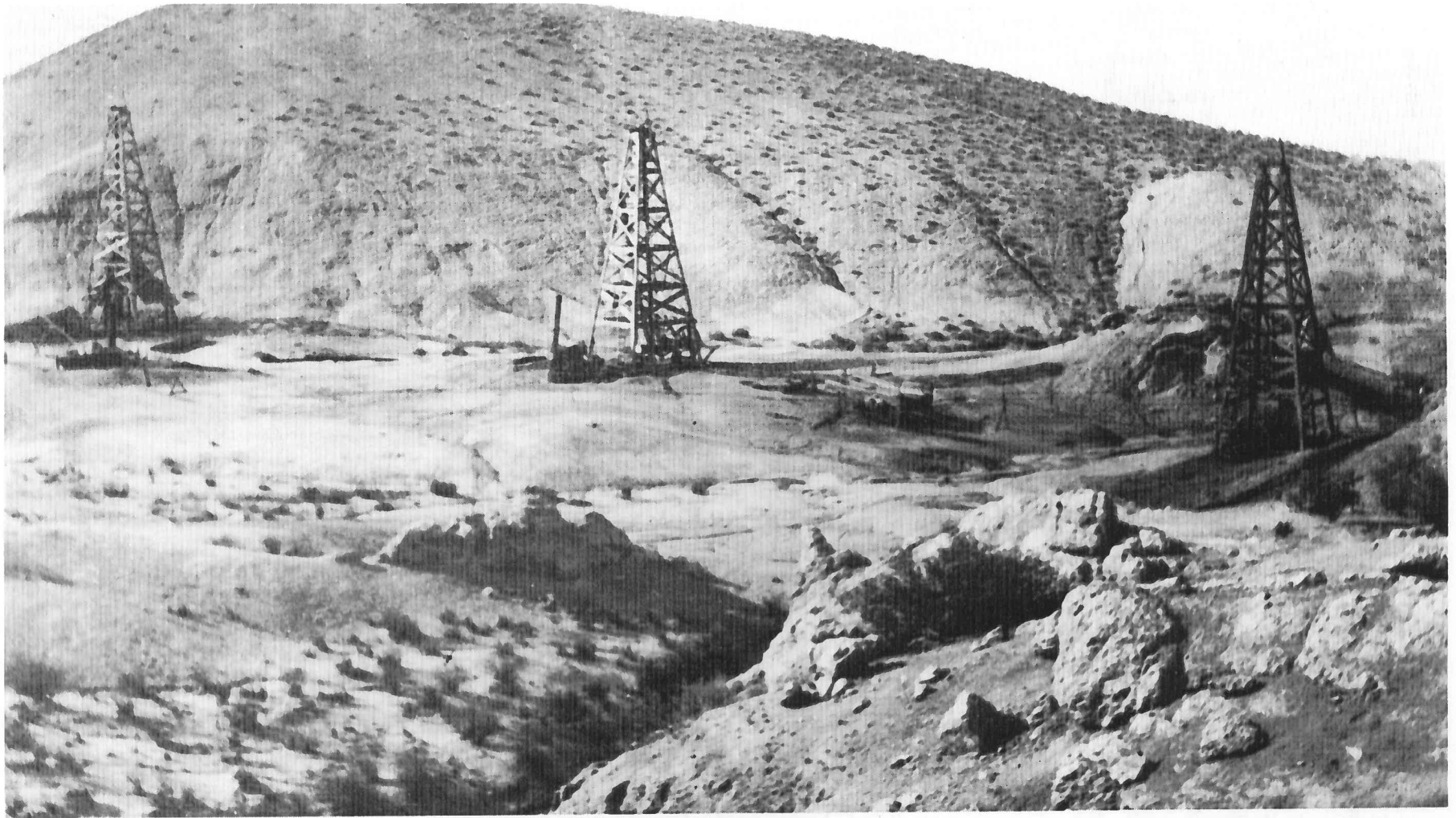




Wells of the Union Oil Company of California in the Torrey Canyon Field in 1897. The company's entire production that year was approximately 125,000 barrels, and 56,000 barrels of it came from these wells. *Union Oil Company of California*

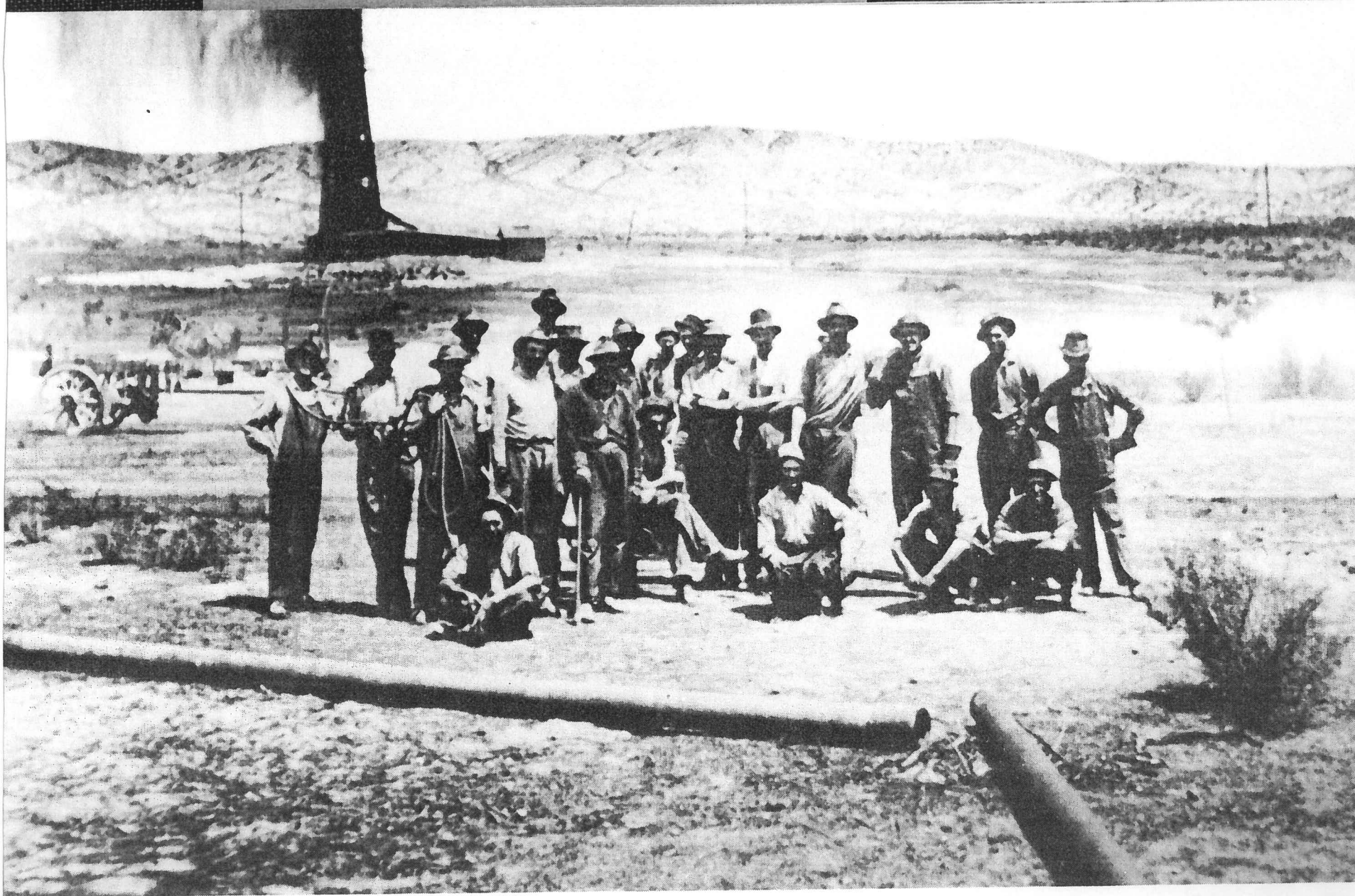






Drilling at the bottom of arroyos in the McKittrick area could be dangerous, for although the region suffered from a lack of surface water, sudden rainstorms could send torrents of raging water sweeping through low-lying areas. *Standard Oil Company of California*

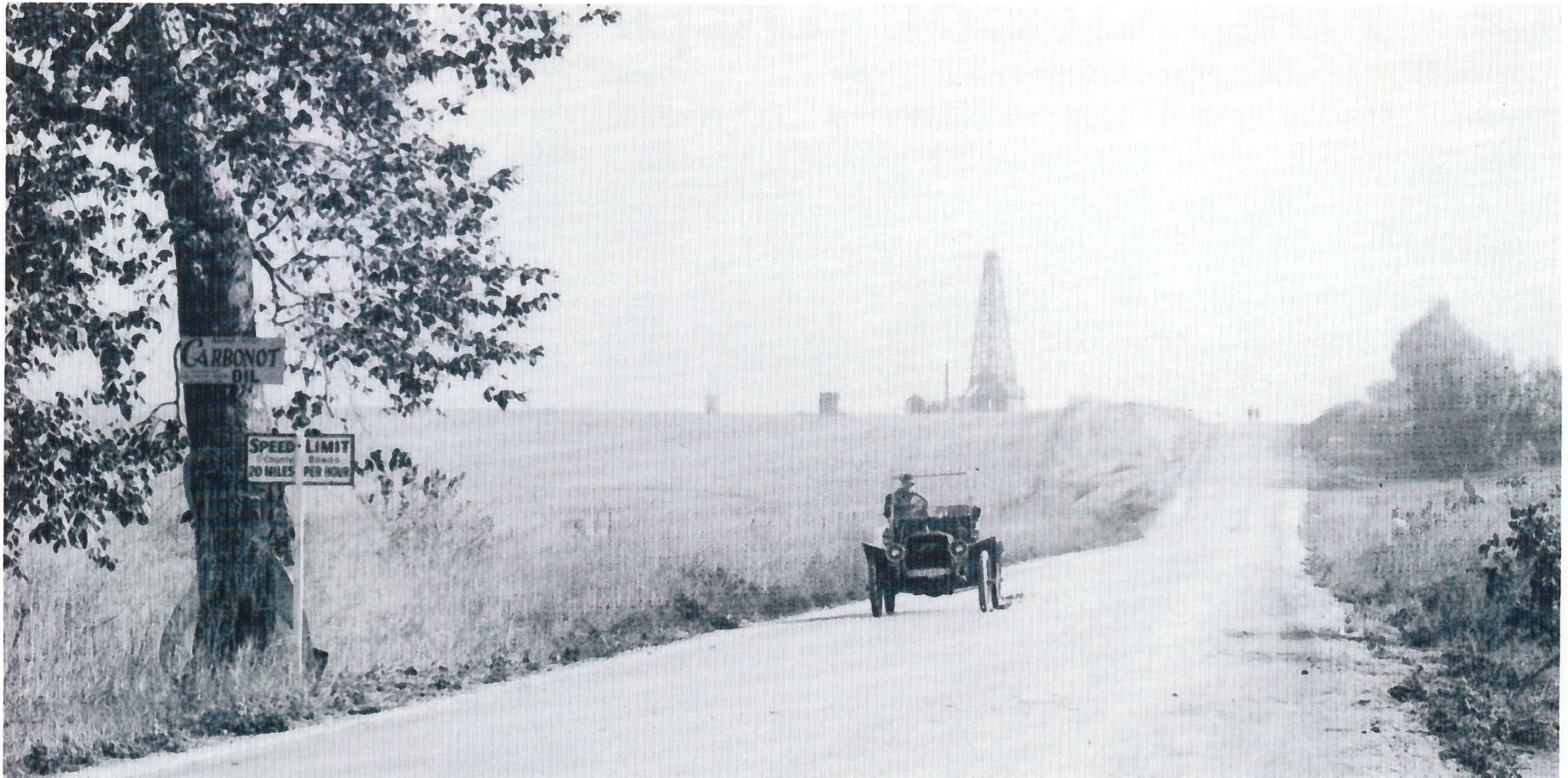




the crew laying pipe to a gusher in the Midway-Sunset Field, 1913. *American Petroleum Institute*







*Wilshire Boulevard was little more than a country road when wildcatters began a determined search for new fields in the Los Angeles Basin. (Seaver Center.)*













*The Torrey Canyon field provided more than a third of Union Oil Company's production during the company's first four years.*

Refinery operations deteriorated, customers went elsewhere, and Union Oil's sales plummeted.

"Our chemist is somewhat visionary," Stewart wrote to an associate, "and we have been a good deal disappointed in the result of his work."

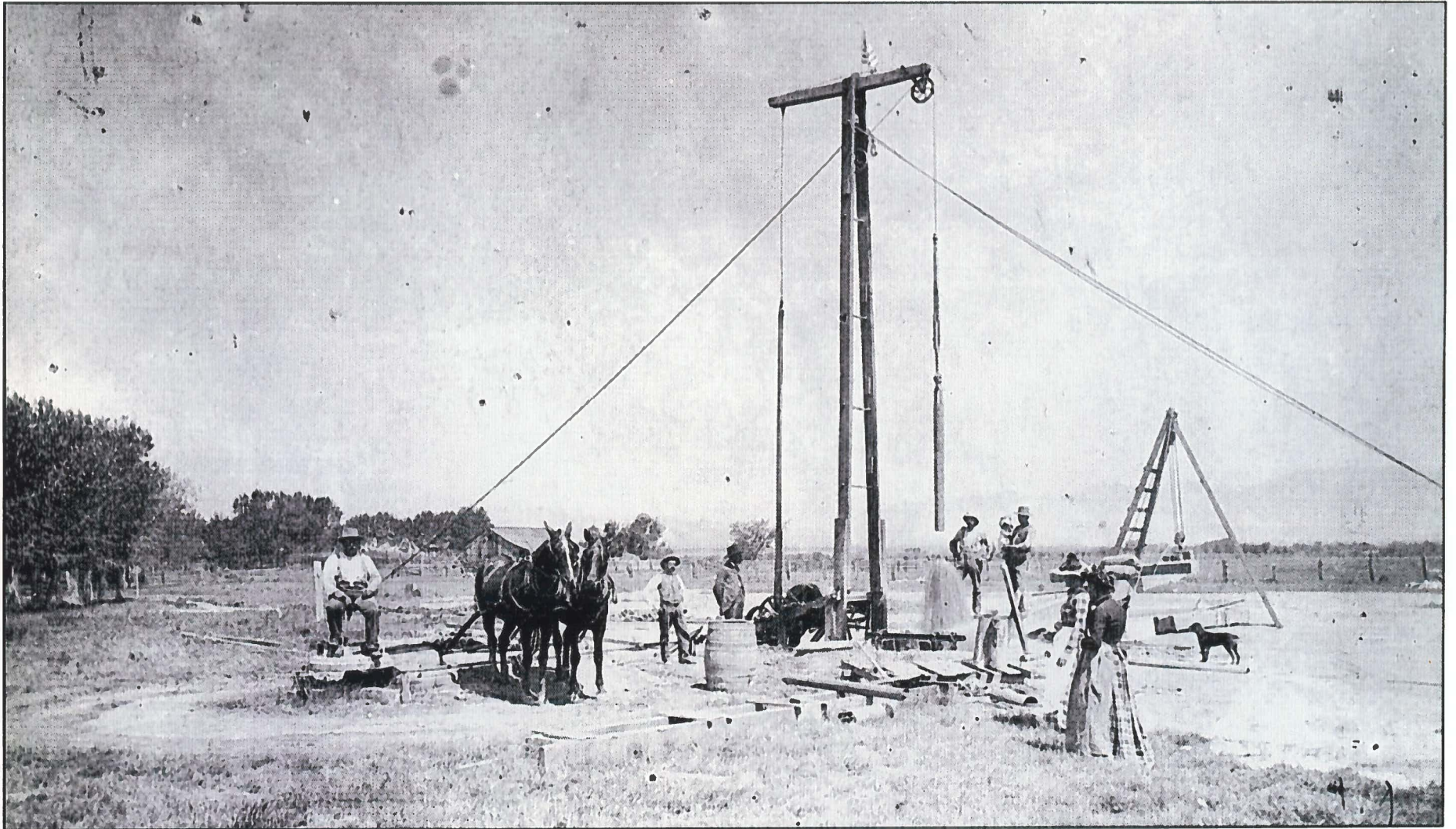
Bard complained: "The great failure of this lubricating oil business is our inability to supply our customers a second time with the oil we have sold them on trial."



## 6 Pipelining in Central California

1909





The Southern Pacific Railroad Company drilled the first artesian well in Tulare County south of Tipton. Artesians were sought after as early as 1859, but it took nearly 20 years to find the right strata. Artesian water flowed to the surface from a depth of 310 feet. The area was later planted with trees, and it became known as the Tree Ranch.

*water well* †