



GOVERNOR'S

**20
21 | SMALL
BUSINESS**
WEBINAR SERIES

Workforce in Texas

Small Business Assistance Team



September 1, 2021

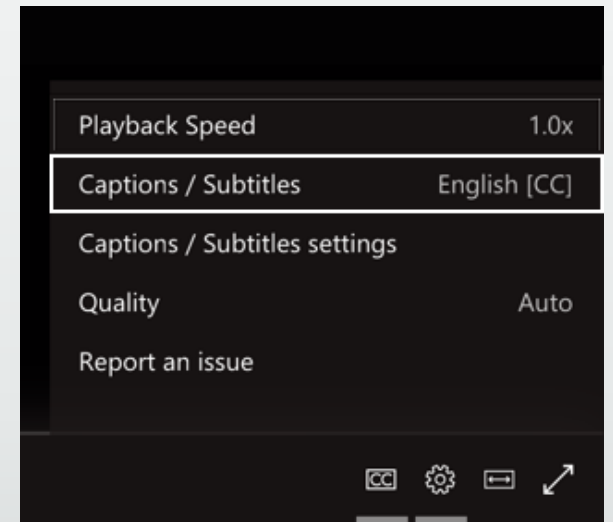


**OFFICE OF THE
GOVERNOR**

ECONOMIC DEVELOPMENT & TOURISM

ACCOMMODATIONS NOTICE

- The streaming text link will be posted in the “Featured” feed; cut and paste into your browser to access <https://tcc.1capapp.com/event/gov2/>
- This webinar offers live captioning and subtitles in English, Spanish, Chinese (Traditional & Hong Kong S.A.R.), Arabic, French, and Vietnamese
- To turn on live captions and subtitles, select **Captions/Subtitles On**  in your video controls
- To change the caption language, select **Settings**  > **Captions / Subtitles**, and choose your language



- **Transcripts are available within 48 hours from our events page at** <https://gov.texas.gov/business/page/small-business-events>



gov.texas.gov/business

512.936.0100

     @TexasEconDev



What Do You Think?

Please like one of these statements, in the Featured Feed:

**I am a business owner facing challenges
regarding retention and/or hiring**

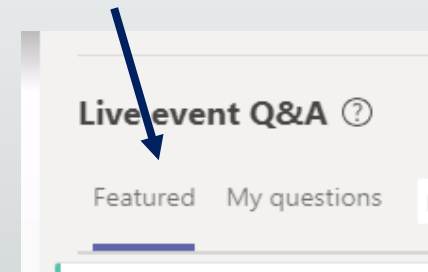
OR

I am a business owner with a full staff

Live Q&A Feed (upper right of screen):



"Featured" Feed Tab:





Adriana Cruz

**Executive Director
Economic Development & Tourism
Office of the Governor**



gov.texas.gov/business

512.936.0100

     @TexasEconDev



What Do You Think?

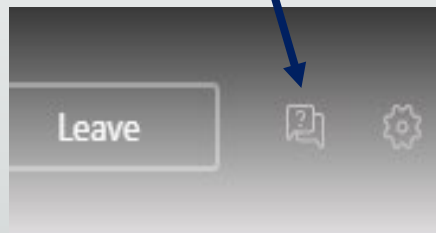
Please like one of these statements, in the Featured Feed:

**I can provide my product or service virtually or while
socially distanced**

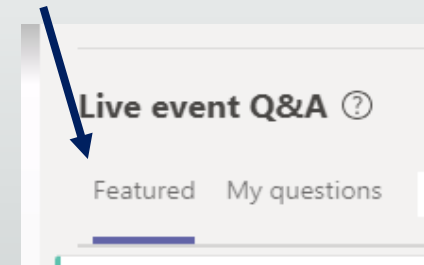
OR

**My products/services cannot be provided virtually or
while socially distanced**

Live Q&A Feed (upper right of screen):



"Featured" Feed Tab:





PANELISTS



Elsa Ramos

Legal Counsel to Commissioner Representing Employers
Texas Workforce Commission



Brandi Trotter

Business Development Supervisor
Workforce Solutions for North Central Texas



Bill Leaverton

Director
Small Business Development Center (SBDC)
Tarleton State University



Vanessa Miller

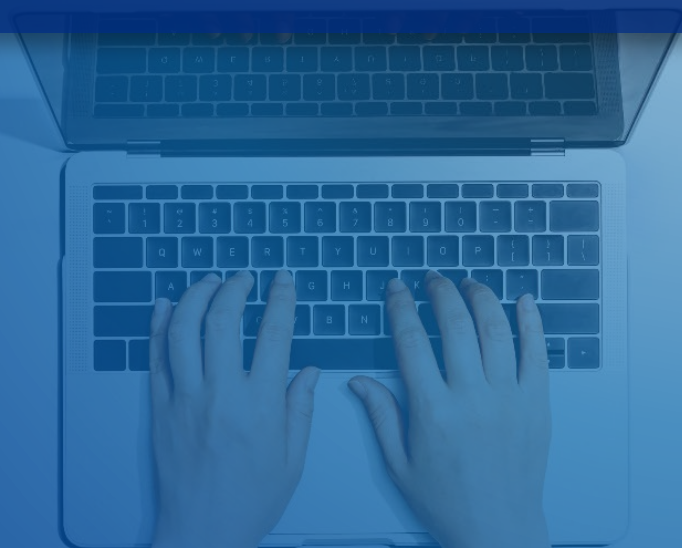
Director of Special Events
The County Line

President

Greater Austin Restaurant Association
Texas Restaurant Association (TRA)



PANEL QUESTIONS





Frequently Asked Questions:

1. As an employer, can I require that my employees follow COVID-19 protocols while at work?
2. We've noticed that some of our employees have refused to return to work when recalled, and that new hires are just not showing up to their first day of work. We wonder if it's because they are choosing to remain on unemployment benefits.
What can we do?
Do we have options?



Frequently Asked Questions:

3. What types of resources are available to assist small businesses with workforce needs?
4. Is there a local TWC office that I can partner with on a more regular basis?



Live Q&A - Please ask questions.....

LIVE Q&A NOW OPEN

- The live Q&A feed is now open...
- Watch the “Featured” or “Published” live Q&A feed
- Check if your question has already been asked
- “Like” the questions you would like answered
- Questions with the most “likes” will be prioritized

Unfortunately we may not get to all questions...



Frequently Asked Questions:

LIVE Q&A NOW OPEN

5. What can businesses do to innovate and become more flexible in today's working environment?
6. How have hiring practices changed given today's working environment?



Frequently Asked Questions:

LIVE Q&A NOW OPEN

7. What strategies can hospitality business implement to find new hires?
8. How do you retain your current fans (Team Members)?



Frequently Asked Questions:

LIVE Q&A NOW OPEN

Join Texas Restaurant Association & Get Involved

[Link to TRA Membership Information](#)

23 Chapters in Texas with 5500 members

Each Chapter has direct involvement with Over 7000 Pro Start Students. Pro Start is a Culinary Arts and Restaurant Management Curriculum taught in 160 High Schools Texas-Wide

[Link to TRA's Pro Start Program in High Schools](#)

Provides Education, Critical Resources & Important Partnerships ie. Workforce Solutions & Texas Workforce Commission

[Providing Free Serve Safe & TABC Certification](#)

[Providing FREE Childcare to Service Industry Employees that Qualify](#)

Free Job Postings www.mytexascareer.com

Greater Austin Chapter Mix & Mingle – Theme of the Evening is Workforce & Working Together!

Date: Wednesday, September 22nd, 2021

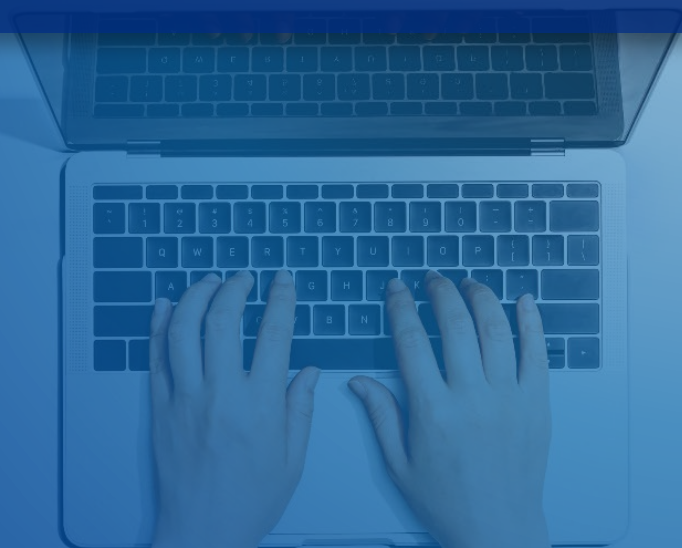
Time: 5:00 PM – 7:00 PM

Email David Waddell for Detailed Invitation dwaddell@txrestaurant.org

Future Partnerships for TRA in Regards to Workforce include; Military & Second Chance Programs. These are expected to launch in Winter 2022.



LIVE QUESTIONS & ANSWERS





NEW!! Small Business Resource Portal



The Governor's
Small Business
Resource Portal

<https://gov.texas.gov/business/page/small-business-portal>

- Provides links to key resources for small businesses and start-ups
 - Local, state and federal resources
 - Business Advice & Growth Assistance
 - Funding Sources, Customized Resources
- Just answer 5 simple questions to customize your results
- Email them to yourself or print



Contact Information & Resources

The Governor's Small Business Assistance Contacts & Resources



- Governor's Small Business Assistance Team
(smallbusiness@gov.texas.gov)
 - Jarvis Brewer, Small Business Advocate
 - Sonia Gaillard, Business Permits Officer
- Small Business Resource Portal link
<https://gov.texas.gov/business/page/small-business-portal>
- Governor's Small Business Webinar series
<https://gov.texas.gov/business/page/small-business-webinars>
Transcripts and slides available here within 48 hours
- Event Calendar: gov.texas.gov/business/events



Contact Information & Resources

Texas Workforce Commission Employer Hotline: 800-832-9394

employerinfo@twc.texas.gov

Workforce Solutions for North Central Texas

<https://dfwjobs.com/>

817-695-9184

Tarleton State University (SBDC)

<https://www.tsusbdc.org>

254-968-0558

Texas Restaurant Association: <https://www.txrestaurant.org/>

Find your local SBDC: <https://americassbdc.org/small-business-consulting-and-training/find-your-sbdc/>

Find your local Workforce Solutions: <https://www.twc.texas.gov/directory-workforce-solutions-offices-services>

THANK YOU



Office of the Governor
Economic Development & Tourism
P.O. Box 12428 | Austin, Texas 78711

512.936.0100

gov.texas.gov/business



TexasEconDev